

Summary of Geometric Mean Titers, by Baseline SARS-CoV-2 Status – NT50 – Subjects 12 Through 15 and 16 Through 25 Years of Age (Immunogenicity Subset) – Dose 2 Evaluable Immunogenicity Population.....	2
Summary of Geometric Mean Titers, by Baseline SARS-CoV-2 Status – NT50 – Subjects 12 Through 15 and 16 Through 25 Years of Age (Immunogenicity Subset) – Dose 2 All-Available Immunogenicity Population.....	4
Summary of Geometric Mean Fold Rise From Before Vaccination to Each Subsequent Time Point, by Baseline SARS-CoV-2 Status – NT50 – Subjects 12 Through 15 and 16 Through 25 Years of Age (Immunogenicity Subset) – Dose 2 Evaluable Immunogenicity Population.....	6
Summary of Geometric Mean Fold Rise From Before Vaccination to Each Subsequent Time Point, by Baseline SARS-CoV-2 Status – NT50 – Subjects 12 Through 15 and 16 Through 25 Years of Age (Immunogenicity Subset) – Dose 2 All-Available Immunogenicity Population.....	7
Summary of Geometric Mean Ratio – NT50 – Comparison of Subjects 12 Through 15 Years of Age to Subjects 16 Through 25 Years of Age (Immunogenicity Subset) – Subjects Without Evidence of Infection up to 1 Month After Dose 2 – Dose 2 Evaluable Immunogenicity Population.....	8
Number (%) of Subjects Achieving a $\geq 4$ -Fold Rise From Before Vaccination to Each Subsequent Time Point, by Baseline SARS-CoV-2 Status – NT50 – Subjects 12 Through 15 and 16 Through 25 Years of Age (Immunogenicity Subset) – Dose 2 Evaluable Immunogenicity Population.....	9
Number (%) of Subjects Achieving a $\geq 4$ -Fold Rise From Before Vaccination to Each Subsequent Time Point 1 Month After Dose 2 – NT50 – Comparison of Subjects 12 Through 15 Years of Age to Subjects 16 Through 25 Years of Age (Immunogenicity Subset) – Subjects Without Evidence of Infection up to 1 Month After Dose 2 – Dose 2 Evaluable Immunogenicity Population.....	10
Listing of Assay Data – Subjects 12 Through 25 Years of Age.....	11
Reverse Cumulative Distribution Curves, SARS-CoV-2 Neutralization Assay – NT50 – Subjects 12 Through 15 and 16 Through 25 Years of Age (Immunogenicity Subset) – Dose 2 Evaluable Immunogenicity Population.....	50
Geometric Mean Titers and 95% CIs: SARS-CoV-2 Neutralization Assay – NT50 – Subjects 12 Through 15 and 16 Through 25 Years of Age (Immunogenicity Subset) – Dose 2 Evaluable Immunogenicity Population.....	51

**Summary of Geometric Mean Titers, by Baseline SARS-CoV-2 Status – NT50 –  
Subjects 12 Through 15 and 16 Through 25 Years of Age (Immunogenicity Subset) –  
Dose 2 Evaluable Immunogenicity Population**

Assay	Dose/ Sampling Time Point <sup>a</sup>	Baseline SARS-CoV-2 Status <sup>b</sup>	Vaccine Group (as Randomized)							
			BNT162b2 (30 µg)				Placebo			
			12-15 Years		16-25 Years		12-15 Years		16-25 Years	
			n <sup>c</sup>	GMT <sup>d</sup> (95% CI <sup>d</sup> )	n <sup>c</sup>	GMT <sup>d</sup> (95% CI <sup>d</sup> )	n <sup>c</sup>	GMT <sup>d</sup> (95% CI <sup>d</sup> )	n <sup>c</sup>	GMT <sup>d</sup> (95% CI <sup>d</sup> )
SARS-CoV-2 neutralization assay - NT50 (titer)	1/Prevax	ALL	155	22.2 (20.7, 23.8)	136	21.1 (20.2, 22.0)	29	22.3 (18.7, 26.7)	24	20.5 (20.5, 20.5)
		POS	8	61.0 (26.4, 140.8)	5	45.3 (10.2, 201.9)	1	251.0 (NE, NE)	0	NE (NE, NE)
		NEG	146	21.0 (20.0, 22.1)	131	20.5 (20.5, 20.5)	27	20.5 (20.5, 20.5)	24	20.5 (20.5, 20.5)
	2/1 Month	ALL	207	1296.4 (1160.4, 1448.4)	185	733.6 (651.0, 826.8)	36	27.3 (20.9, 35.6)	32	21.5 (19.5, 23.7)
		POS	10	2342.2 (1308.7, 4191.8)	8	1439.2 (727.1, 2848.7)	2	191.0 (1.2, 30873.6)	1	20.5 (NE, NE)
		NEG	192	1253.2 (1118.6, 1404.1)	177	711.6 (630.7, 802.9)	33	24.4 (19.4, 30.8)	31	21.5 (19.5, 23.8)

Abbreviations: COVID-19 = coronavirus disease 2019; GMT = geometric mean titer; LLOQ = lower limit of quantitation; NAAT = nucleic acid amplification test; N-binding = SARS-CoV-2 nucleoprotein-binding; NE = not estimable; NEG = negative; NT50 = 50% neutralizing titer; POS = positive; Prevax = before vaccination; SARS-CoV-2 = severe acute respiratory syndrome coronavirus 2.

- Protocol-specified timing for blood sample collection.
- POS = positive N-binding antibody result at Visit 1, positive NAAT result at Visit 1, or medical history of COVID-19. NEG = negative N-binding antibody result at Visit 1, negative NAAT result at Visit 1, and no medical history of COVID-19. ALL = irrespective of baseline SARS-CoV-2 status, including missing baseline status.
- n = Number of subjects with valid and determinate assay results for the specified assay at the given dose/sampling time point.
- GMTs and 2-sided 95% CIs were calculated by exponentiating the mean logarithm of the titers and the corresponding CIs (based on the Student t

**Summary of Geometric Mean Titers, by Baseline SARS-CoV-2 Status – NT50 –  
Subjects 12 Through 15 and 16 Through 25 Years of Age (Immunogenicity Subset) –  
Dose 2 Evaluable Immunogenicity Population**

		Vaccine Group (as Randomized)				
		BNT162b2 (30 µg)		Placebo		
Assay	Dose/ Sampling Time Point <sup>a</sup>	Baseline SARS-CoV-2 Status <sup>b</sup>	12-15 Years	16-25 Years	12-15 Years	16-25 Years
			n <sup>c</sup>	GMT <sup>d</sup> (95% CI <sup>d</sup> )	n <sup>c</sup>	GMT <sup>d</sup> (95% CI <sup>d</sup> )

distribution). Assay results below the LLOQ were set to  $0.5 \times \text{LLOQ}$ .

PFIZER CONFIDENTIAL SDTM Creation: 09FEB2022 (12:16) Source Data: adva Table Generation: 09FEB2022 (18:59)

(CutoffDate: 13MAR2021, SnapshotDate: 25MAR2021) Output File: ./nda3\_unblinded/C4591001\_BLA\_IMM/adva\_s001\_gm\_ped\_eval

**Summary of Geometric Mean Titers, by Baseline SARS-CoV-2 Status – NT50 –  
Subjects 12 Through 15 and 16 Through 25 Years of Age (Immunogenicity Subset) –  
Dose 2 All-Available Immunogenicity Population**

Assay	Dose/ Sampling Time Point <sup>a</sup>	Baseline SARS-CoV-2 Status <sup>b</sup>	Vaccine Group (as Randomized)							
			BNT162b2 (30 µg)				Placebo			
			12-15 Years		16-25 Years		12-15 Years		16-25 Years	
			n <sup>c</sup>	GMT <sup>d</sup> (95% CI <sup>d</sup> )	n <sup>c</sup>	GMT <sup>d</sup> (95% CI <sup>d</sup> )	n <sup>c</sup>	GMT <sup>d</sup> (95% CI <sup>d</sup> )	n <sup>c</sup>	GMT <sup>d</sup> (95% CI <sup>d</sup> )
SARS-CoV-2 neutralization assay - NT50 (titer)	1/Prevax	ALL	156	22.2 (20.7, 23.8)	140	21.1 (20.2, 22.0)	29	22.3 (18.7, 26.7)	25	20.5 (20.5, 20.5)
		POS	8	61.0 (26.4, 140.8)	5	45.3 (10.2, 201.9)	1	251.0 (NE, NE)	0	NE (NE, NE)
		NEG	147	21.0 (20.0, 22.1)	135	20.5 (20.5, 20.5)	27	20.5 (20.5, 20.5)	25	20.5 (20.5, 20.5)
	2/1 Month	ALL	208	1297.7 (1162.2, 1449.1)	190	729.0 (648.0, 820.1)	36	27.3 (20.9, 35.6)	34	21.4 (19.6, 23.5)
		POS	10	2342.2 (1308.7, 4191.8)	8	1439.2 (727.1, 2848.7)	2	191.0 (1.2, 30873.6)	1	20.5 (NE, NE)
		NEG	193	1254.8 (1120.6, 1405.1)	182	707.5 (628.2, 796.8)	33	24.4 (19.4, 30.8)	33	21.5 (19.5, 23.6)

Abbreviations: COVID-19 = coronavirus disease 2019; GMT = geometric mean titer; LLOQ = lower limit of quantitation; NAAT = nucleic acid amplification test; N-binding = SARS-CoV-2 nucleoprotein-binding; NE = not estimable; NEG = negative; NT50 = 50% neutralizing titer; POS = positive; Prevax = before vaccination; SARS-CoV-2 = severe acute respiratory syndrome coronavirus 2.

a. Protocol-specified timing for blood sample collection.

b. POS = positive N-binding antibody result at Visit 1, positive NAAT result at Visit 1, or medical history of COVID-19. NEG = negative N-binding antibody result at Visit 1, negative NAAT result at Visit 1, and no medical history of COVID-19. ALL = irrespective of baseline SARS-CoV-2 status, including missing baseline status.

c. n = Number of subjects with valid and determinate assay results for the specified assay at the given dose/sampling time point.

d. GMTs and 2-sided 95% CIs were calculated by exponentiating the mean logarithm of the titers and the corresponding CIs (based on the Student t

**Summary of Geometric Mean Titers, by Baseline SARS-CoV-2 Status – NT50 –  
Subjects 12 Through 15 and 16 Through 25 Years of Age (Immunogenicity Subset) –  
Dose 2 All-Available Immunogenicity Population**

Assay	Dose/ Sampling Time Point <sup>a</sup>	Baseline SARS-CoV-2 Status <sup>b</sup>	Vaccine Group (as Randomized)			
			BNT162b2 (30 µg)		Placebo	
			12-15 Years	16-25 Years	12-15 Years	16-25 Years
n <sup>c</sup>	GMT <sup>d</sup> (95% CI <sup>d</sup> )	n <sup>c</sup>	GMT <sup>d</sup> (95% CI <sup>d</sup> )	n <sup>c</sup>	GMT <sup>d</sup> (95% CI <sup>d</sup> )	

distribution). Assay results below the LLOQ were set to  $0.5 \times \text{LLOQ}$ .

PFIZER CONFIDENTIAL SDTM Creation: 09FEB2022 (12:16) Source Data: adva Table Generation: 09FEB2022 (18:59)

(CutoffDate: 13MAR2021, SnapshotDate: 25MAR2021) Output File: ./nda3\_unblinded/C4591001\_BLA\_IMM/adva\_s001\_gm\_ped\_aai

**Summary of Geometric Mean Fold Rise From Before Vaccination to Each Subsequent Time Point, by Baseline SARS-CoV-2 Status – NT50 – Subjects 12 Through 15 and 16 Through 25 Years of Age (Immunogenicity Subset) – Dose 2 Evaluable Immunogenicity Population**

Assay	Dose/ Sampling Time Point <sup>a</sup>	Baseline SARS-CoV-2 Status <sup>b</sup>	Vaccine Group (as Randomized)							
			BNT162b2 (30 µg)				Placebo			
			12-15 Years		16-25 Years		12-15 Years		16-25 Years	
			n <sup>c</sup>	GMFR <sup>d</sup> (95% CI <sup>d</sup> )	n <sup>c</sup>	GMFR <sup>d</sup> (95% CI <sup>d</sup> )	n <sup>c</sup>	GMFR <sup>d</sup> (95% CI <sup>d</sup> )	n <sup>c</sup>	GMFR <sup>d</sup> (95% CI <sup>d</sup> )
SARS-CoV-2 neutralization assay - NT50 (titer)	2/1 Month	ALL	154	60.4 (52.5, 69.4)	135	35.5 (30.6, 41.0)	29	1.2 (0.9, 1.6)	24	1.1 (0.9, 1.2)
		POS	8	42.2 (24.8, 72.0)	5	40.2 (3.7, 437.7)	1	1.1 (NE, NE)	0	NE (NE, NE)
		NEG	145	61.9 (53.6, 71.5)	130	35.3 (30.7, 40.6)	27	1.2 (0.9, 1.6)	24	1.1 (0.9, 1.2)

Abbreviations: COVID-19 = coronavirus disease 2019; GMFR = geometric mean fold rise; LLOQ = lower limit of quantitation; NAAT = nucleic acid amplification test; N-binding = SARS-CoV-2 nucleoprotein-binding; NE = not estimable; NEG = negative; NT50 = 50% neutralizing titer; POS = positive; SARS-CoV-2 = severe acute respiratory syndrome coronavirus 2.

- a. Protocol-specified timing for blood sample collection.
- b. POS = positive N-binding antibody result at Visit 1, positive NAAT result at Visit 1, or medical history of COVID-19. NEG = negative N-binding antibody result at Visit 1, negative NAAT result at Visit 1, and no medical history of COVID-19. ALL = irrespective of baseline SARS-CoV-2 status, including missing baseline status.
- c. n = Number of subjects with valid and determinate assay results for the specified assay both prevaccination time points and at the given dose/sampling time point.
- d. GMFRs and 2-sided 95% CIs were calculated by exponentiating the mean logarithm of fold rises and the corresponding CIs (based on the Student t distribution). Assay results below the LLOQ were set to 0.5 × LLOQ in the analysis.

PFIZER CONFIDENTIAL SDTM Creation: 09FEB2022 (12:16) Source Data: adva Table Generation: 09FEB2022 (18:59)

(Cutoff Date: 13MAR2021, Snapshot Date: 25MAR2021) Output File: ./nda3\_unblinded/C4591001\_BLA\_IMM/adva\_s002\_gmfr\_ped\_eval

**Summary of Geometric Mean Fold Rise From Before Vaccination to Each Subsequent Time Point, by Baseline SARS-CoV-2 Status – NT50 – Subjects 12 Through 15 and 16 Through 25 Years of Age (Immunogenicity Subset) – Dose 2 All-Available Immunogenicity Population**

Assay	Dose/ Sampling Time Point <sup>a</sup>	Baseline SARS-CoV-2 Status <sup>b</sup>	Vaccine Group (as Randomized)							
			BNT162b2 (30 µg)				Placebo			
			12-15 Years		16-25 Years		12-15 Years		16-25 Years	
			n <sup>c</sup>	GMFR <sup>d</sup> (95% CI <sup>d</sup> )	n <sup>c</sup>	GMFR <sup>d</sup> (95% CI <sup>d</sup> )	n <sup>c</sup>	GMFR <sup>d</sup> (95% CI <sup>d</sup> )	n <sup>c</sup>	GMFR <sup>d</sup> (95% CI <sup>d</sup> )
SARS-CoV-2 neutralization assay - NT50 (titer)	2/1 Month	ALL	155	60.5 (52.7, 69.4)	139	35.0 (30.3, 40.4)	29	1.2 (0.9, 1.6)	25	1.1 (0.9, 1.2)
		POS	8	42.2 (24.8, 72.0)	5	40.2 (3.7, 437.7)	1	1.1 (NE, NE)	0	NE (NE, NE)
		NEG	146	62.0 (53.7, 71.6)	134	34.8 (30.4, 40.0)	27	1.2 (0.9, 1.6)	25	1.1 (0.9, 1.2)

Abbreviations: COVID-19 = coronavirus disease 2019; GMFR = geometric mean fold rise; LLOQ = lower limit of quantitation; NAAT = nucleic acid amplification test; N-binding = SARS-CoV-2 nucleoprotein-binding; NE = not estimable; NEG = negative; NT50 = 50% neutralizing titer; POS = positive; SARS-CoV-2 = severe acute respiratory syndrome coronavirus 2.

- a. Protocol-specified timing for blood sample collection.
- b. POS = positive N-binding antibody result at Visit 1, positive NAAT result at Visit 1, or medical history of COVID-19. NEG = negative N-binding antibody result at Visit 1, negative NAAT result at Visit 1, and no medical history of COVID-19. ALL = irrespective of baseline SARS-CoV-2 status, including missing baseline status.
- c. n = Number of subjects with valid and determinate assay results for the specified assay both prevaccination time points and at the given dose/sampling time point.
- d. GMFRs and 2-sided 95% CIs were calculated by exponentiating the mean logarithm of fold rises and the corresponding CIs (based on the Student t distribution). Assay results below the LLOQ were set to 0.5 × LLOQ in the analysis.

PFIZER CONFIDENTIAL SDTM Creation: 09FEB2022 (12:16) Source Data: adva Table Generation: 09FEB2022 (18:59)

(Cutoff Date: 13MAR2021, Snapshot Date: 25MAR2021) Output File: ./nda3\_unblinded/C4591001\_BLA\_IMM/adva\_s002\_gmfr\_ped\_aai

**Summary of Geometric Mean Ratio – NT50 –  
Comparison of Subjects 12 Through 15 Years of Age to Subjects 16 Through 25 Years of Age (Immunogenicity Subset) –  
Subjects Without Evidence of Infection up to 1 Month After Dose 2 – Dose 2 Evaluable Immunogenicity Population**

Vaccine Group (as Randomized)							
BNT162b2 (30 µg)							
Assay	Dose/ Sampling Time Point <sup>a</sup>	12-15 Years		16-25 Years		12-15 Years/16-25 Years	
		n <sup>b</sup>	GMT <sup>c</sup> (95% CI <sup>c</sup> )	n <sup>b</sup>	GMT <sup>c</sup> (95% CI <sup>c</sup> )	GMR <sup>d</sup> (95% CI <sup>d</sup> )	Met Noninferiority Objective <sup>e</sup> (Y/N)
SARS-CoV-2 neutralization assay - NT50 (titer)	2/1 Month	190	1253.6 (1117.7, 1406.1)	170	708.1 (625.9, 801.1)	1.77 (1.50, 2.09)	Y

Abbreviations: GMR = geometric mean ratio; GMT = geometric mean titer; LLOQ = lower limit of quantitation;

NT50 = 50% neutralizing titer; SARS-CoV-2 = severe acute respiratory syndrome coronavirus 2.

Note: Subjects who had no serological or virological evidence (up to 1 month after receipt of the last dose) of past SARS-CoV-2 infection (ie, N-binding antibody [serum] negative at Visit 1 and SARS-CoV-2 not detected by NAAT [nasal swab] at Visits 1 and 2), and had negative NAAT (nasal swab) at any unscheduled visit up to 1 month after Dose 2 were included in the analysis.

- Protocol-specified timing for blood sample collection.
- n = Number of subjects with valid and determinate assay results for the specified assay at the given dose/sampling time point.
- GMTs and 2-sided 95% CIs were calculated by exponentiating the mean logarithm of the titers and the corresponding CIs (based on the Student t distribution). Assay results below the LLOQ were set to 0.5 × LLOQ.
- GMRs and 2-sided 95% CIs were calculated by exponentiating the mean difference of the logarithms of the titers (Group 1 [12-15 years] – Group 2 [16-25 years]) and the corresponding CI (based on the Student t distribution).
- Noninferiority is declared if the lower bound of the 2-sided 95% CI for the GMR is greater than 0.67.

PFIZER CONFIDENTIAL SDTM Creation: 09FEB2022 (12:16) Source Data: adva Table Generation: 09FEB2022 (18:59)

(Cutoff Date: 13MAR2021, Snapshot Date: 25MAR2021) Output File: ./nda3\_unblinded/C4591001\_BLA\_IMM/adva\_s001\_gmr\_ped\_ev\_eval



**Number (%) of Subjects Achieving a  $\geq 4$ -Fold Rise From Before Vaccination to Each Subsequent Time Point, by Baseline SARS-CoV-2 Status – NT50 – Subjects 12 Through 15 and 16 Through 25 Years of Age (Immunogenicity Subset) – Dose 2 Evaluable Immunogenicity Population**

Assay	Dose/ Sampling Time Point <sup>a</sup>	Baseline SARS-CoV-2 Status <sup>b</sup>	Vaccine Group (as Randomized)							
			BNT162b2 (30 µg)				Placebo			
			12-15 Years		16-25 Years		12-15 Years		16-25 Years	
			N <sup>c</sup>	n <sup>d</sup> (%) (95% CI <sup>e</sup> )	N <sup>c</sup>	n <sup>d</sup> (%) (95% CI <sup>e</sup> )	N <sup>c</sup>	n <sup>d</sup> (%) (95% CI <sup>e</sup> )	N <sup>c</sup>	n <sup>d</sup> (%) (95% CI <sup>e</sup> )
SARS-CoV-2 neutralization assay - 2/1 Month NT50 (titer)	ALL		154	150 (97.4) (93.5, 99.3)	135	130 (96.3) (91.6, 98.8)	29	1 (3.4) (0.1, 17.8)	24	0 (0.0) (0.0, 14.2)
		POS	8	8 (100.0) (63.1, 100.0)	5	4 (80.0) (28.4, 99.5)	1	0 (0.0) (0.0, 97.5)	0	0 (NE) (NE, NE)
		NEG	145	141 (97.2) (93.1, 99.2)	130	126 (96.9) (92.3, 99.2)	27	1 (3.7) (0.1, 19.0)	24	0 (0.0) (0.0, 14.2)

Abbreviations: LLOQ = lower limit of quantitation; NE = not estimable; NT50 = 50% neutralizing titer; SARS-CoV-2 = severe acute respiratory syndrome coronavirus 2.

Note: Baseline assay results below the LLOQ were set to LLOQ in the analysis.

- a. Protocol-specified timing for blood sample collection.
- b. POS = positive N-binding antibody result at Visit 1, positive NAAT result at Visit 1, or medical history of COVID-19. NEG = negative N-binding antibody result at Visit 1, negative NAAT result at Visit 1, and no medical history of COVID-19. ALL = irrespective of baseline SARS-CoV-2 status, including missing baseline status
- c. N = number of subjects with valid and determinate assay results for the specified assay both before vaccination and at the given dose/sampling time point. These values are the denominators for the percentage calculations.
- d. n = Number of subjects with  $\geq 4$ -fold rise from before vaccination for the given assay at the given dose/sampling time point.
- e. Exact 2-sided CI based on the Clopper and Pearson method.

PFIZER CONFIDENTIAL SDTM Creation: 09FEB2022 (12:16) Source Data: adva Table Generation: 09FEB2022 (18:59)

(Cutoff Date: 13MAR2021, Snapshot Date: 25MAR2021) Output File: ./nda3\_unblinded/C4591001\_BLA\_IMM/adva\_s001\_4fold\_ped\_eval

**Number (%) of Subjects Achieving a  $\geq 4$ -Fold Rise From Before Vaccination to Each Subsequent Time Point 1 Month After Dose 2 – NT50 – Comparison of Subjects 12 Through 15 Years of Age to Subjects 16 Through 25 Years of Age (Immunogenicity Subset) – Subjects Without Evidence of Infection up to 1 Month After Dose 2 – Dose 2 Evaluable Immunogenicity Population**

Assay	Dose/ Sampling Time Point <sup>a</sup>	Vaccine Group (as Randomized)					
		BNT162b2 (30 µg)				Difference	
		12-15 Years		16-25 Years			
N <sup>b</sup>	n <sup>c</sup> (%) (95% CI <sup>d</sup> )	N <sup>b</sup>	n <sup>c</sup> (%) (95% CI <sup>d</sup> )	% <sup>e</sup>	(95% CI <sup>f</sup> )		
SARS-CoV-2 neutralization assay - NT50 (titer)	2/1 Month	143	139 (97.2) (93.0, 99.2)	124	120 (96.8) (91.9, 99.1)	0.4	(-4.2, 5.5)

Abbreviations: LLOQ = lower limit of quantitation; NT50 = 50% neutralizing titer; SARS-CoV-2 = severe acute respiratory syndrome coronavirus 2.  
 Note: Subjects who had no serological or virological evidence (up to 1 month after receipt of the last dose) of past SARS-CoV-2 infection (ie, N-binding antibody [serum] negative at Visit 1 and SARS-CoV-2 not detected by NAAT [nasal swab] at Visits 1 and 2), and had negative NAAT (nasal swab) at any unscheduled visit up to 1 month after Dose 2 were included in the analysis.

Note: Baseline assay results below the LLOQ were set to LLOQ in the analysis.

- a. Protocol-specified timing for blood sample collection.
- b. N = number of subjects with valid and determinate assay results for the specified assay both before vaccination and at the given dose/sampling time point. These values are the denominators for the percentage calculations.
- c. n = Number of subjects with  $\geq 4$ -fold rise from before vaccination for the given assay at the given dose/sampling time point.
- d. Exact 2-sided CI based on the Clopper and Pearson method.
- e. Difference in proportions, expressed as a percentage (12-15 years – 16-25 years).
- f. 2-Sided CI, based on the Miettinen and Nurminen method for the difference in proportions, expressed as a percentage.

PFIZER CONFIDENTIAL SDTM Creation: 09FEB2022 (12:16) Source Data: adva Table Generation: 09FEB2022 (18:59)

(Cutoff Date: 13MAR2021, Snapshot Date: 25MAR2021) Output File: ./nda3\_unblinded/C4591001\_BLA\_IMM/adva\_s003\_4fold\_ped\_eval

**16.2.6.1 Listing of Assay Data – Subjects 12 Through 25 Years of Age**

<b>Age Group (Years)</b>	<b>Vaccine Group (as Randomized)</b>	<b>Subject</b>	<b>Dose/ Sampling Time Point</b>	<b>Date of Sample</b>	<b>Rel Day<sup>a</sup></b>	<b>NT50 (Titer)</b>
12-15	BNT162b2 (30 µg)	C4591001 1005 10051328	2/1 Month	11DEC2020	31	1938
		C4591001 1005 10051412	1/Prevax	14DEC2020	1	10
		C4591001 1006 10061184	2/1 Month	09FEB2021	36	1192
			1/Prevax	30NOV2020	1	10
		C4591001 1006 10061209	2/1 Month	22JAN2021	33	1838
			1/Prevax	04DEC2020	1	273
		C4591001 1006 10061220	2/1 Month	26JAN2021	35	3923
			1/Prevax	07DEC2020	1	10
		C4591001 1006 10061227	1/Prevax	07DEC2020	1	10
		C4591001 1006 10061230	2/1 Month	02FEB2021	34	720
		C4591001 1006 10061231	2/1 Month	26JAN2021	30	2203
		C4591001 1006 10061234	2/1 Month	27JAN2021	29	926
		C4591001 1006 10061249	1/Prevax	11DEC2020	1	10
			2/1 Month	04FEB2021	36	2017
		C4591001 1006 10061256	1/Prevax	11DEC2020	1	10
			2/1 Month	01FEB2021	34	648
		C4591001 1006 10061261	1/Prevax	14DEC2020	1	10
		C4591001 1006 10061263	2/1 Month	05FEB2021	33	2026
		C4591001 1006 10061265	1/Prevax	18DEC2020	1	10
			2/1 Month	04FEB2021	30	1578
C4591001 1006 10061274	1/Prevax	16DEC2020	1	10		
	2/1 Month	05FEB2021	29	3332		
C4591001 1006 10061280	1/Prevax	17DEC2020	1	10		
C4591001 1006 10061282	1/Prevax	18DEC2020	1	10		
C4591001 1007 10071417	1/Prevax	22OCT2020	1	10		

090177e1998db3\Final\Final On: 08-Mar-2022 12:27 (GMT)

**16.2.6.1 Listing of Assay Data – Subjects 12 Through 25 Years of Age**

Age Group (Years)	Vaccine Group (as Randomized)	Subject	Dose/ Sampling Time Point	Date of Sample	Rel Day <sup>a</sup>	NT50 (Titer)
			2/1 Month	10DEC2020	29	1629
		C4591001 1007 10071467	1/Prevax	30NOV2020	1	10
		C4591001 1007 10071469	1/Prevax	30NOV2020	1	10
			2/1 Month	20JAN2021	31	7683
		C4591001 1007 10071471	1/Prevax	30NOV2020	1	10
		C4591001 1007 10071488	1/Prevax	01DEC2020	1	10
			2/1 Month	20JAN2021	30	889
		C4591001 1007 10071494	2/1 Month	20JAN2021	31	620
		C4591001 1007 10071504	1/Prevax	07DEC2020	1	10
			2/1 Month	27JAN2021	29	2079
		C4591001 1007 10071506	1/Prevax	07DEC2020	1	10
			2/1 Month	25JAN2021	29	1099
		C4591001 1007 10071512	1/Prevax	07DEC2020	1	10
			2/1 Month	25JAN2021	29	1171
		C4591001 1007 10071517	1/Prevax	08DEC2020	1	10
			2/1 Month	26JAN2021	29	789
		C4591001 1007 10071521	1/Prevax	08DEC2020	1	10
			2/1 Month	28JAN2021	31	1130
		C4591001 1007 10071523	1/Prevax	08DEC2020	1	10
		C4591001 1007 10071525	1/Prevax	08DEC2020	1	10
			2/1 Month	03FEB2021	37	1484
		C4591001 1007 10071526	2/1 Month	26JAN2021	29	1876
		C4591001 1007 10071529	1/Prevax	09DEC2020	1	10
			2/1 Month	27JAN2021	29	1542
		C4591001 1007 10071536	1/Prevax	09DEC2020	1	10
			2/1 Month	26JAN2021	29	921

090177e1998db3\Final\Final On: 08-Mar-2022 12:27 (GMT)

**16.2.6.1 Listing of Assay Data – Subjects 12 Through 25 Years of Age**

<b>Age Group (Years)</b>	<b>Vaccine Group (as Randomized)</b>	<b>Subject</b>	<b>Dose/ Sampling Time Point</b>	<b>Date of Sample</b>	<b>Rel Day<sup>a</sup></b>	<b>NT50 (Titer)</b>
		C4591001 1007 10071537	1/Prevax	09DEC2020	1	10
			2/1 Month	27JAN2021	29	1326
		C4591001 1007 10071546	1/Prevax	10DEC2020	1	10
			2/1 Month	27JAN2021	29	1604
		C4591001 1007 10071550	1/Prevax	10DEC2020	1	10
			2/1 Month	28JAN2021	30	2537
		C4591001 1007 10071555	1/Prevax	10DEC2020	1	10
			2/1 Month	26JAN2021	29	832
		C4591001 1007 10071558	1/Prevax	14DEC2020	1	10
			2/1 Month	03FEB2021	31	3867
		C4591001 1007 10071561	1/Prevax	14DEC2020	1	10
			2/1 Month	02FEB2021	30	1933
		C4591001 1007 10071564	1/Prevax	14DEC2020	1	55
			2/1 Month	08FEB2021	34	1282
		C4591001 1007 10071567	1/Prevax	15DEC2020	1	10
			2/1 Month	02FEB2021	29	782
		C4591001 1007 10071574	1/Prevax	16DEC2020	1	10
		C4591001 1007 10071575	1/Prevax	16DEC2020	1	10
			2/1 Month	03FEB2021	29	1136
		C4591001 1007 10071579	1/Prevax	16DEC2020	1	10
			2/1 Month	08FEB2021	34	1369
		C4591001 1007 10071580	1/Prevax	16DEC2020	1	10
			2/1 Month	04FEB2021	30	1929
		C4591001 1007 10071587	1/Prevax	17DEC2020	1	10
			2/1 Month	04FEB2021	29	497
		C4591001 1008 10081754	2/1 Month	22JAN2021	32	1607

090177e1998db3\Final\Final On: 08-Mar-2022 12:27 (GMT)

**16.2.6.1 Listing of Assay Data – Subjects 12 Through 25 Years of Age**

<b>Age Group (Years)</b>	<b>Vaccine Group (as Randomized)</b>	<b>Subject</b>	<b>Dose/ Sampling Time Point</b>	<b>Date of Sample</b>	<b>Rel Day<sup>a</sup></b>	<b>NT50 (Titer)</b>
		C4591001 1008 10081760	1/Prevax	07DEC2020	1	10
			2/1 Month	26JAN2021	30	866
		C4591001 1008 10081764	1/Prevax	07DEC2020	1	10
		C4591001 1008 10081770	1/Prevax	09DEC2020	1	33
			2/1 Month	27JAN2021	29	2342
		C4591001 1008 10081792	1/Prevax	14DEC2020	1	10
			2/1 Month	01FEB2021	29	865
		C4591001 1008 10081795	1/Prevax	15DEC2020	1	10
			2/1 Month	04FEB2021	29	2195
		C4591001 1008 10081797	2/1 Month	03FEB2021	30	908
		C4591001 1008 10081800	1/Prevax	16DEC2020	1	10
		C4591001 1008 10081802	1/Prevax	17DEC2020	1	10
			2/1 Month	04FEB2021	29	745
		C4591001 1008 10081805	1/Prevax	17DEC2020	1	10
			2/1 Month	05FEB2021	30	2637
		C4591001 1008 10081810	1/Prevax	18DEC2020	1	10
			2/1 Month	05FEB2021	29	2211
		C4591001 1008 10081813	1/Prevax	18DEC2020	1	10
			2/1 Month	08FEB2021	32	5462
		C4591001 1008 10081814	1/Prevax	18DEC2020	1	10
			2/1 Month	05FEB2021	29	1285
		C4591001 1008 10081818	1/Prevax	18DEC2020	1	10
			2/1 Month	05FEB2021	29	1683
		C4591001 1009 10091205	1/Prevax	15OCT2020	1	10
			2/1 Month	04DEC2020	29	726
		C4591001 1009 10091221	1/Prevax	19OCT2020	1	10

090177e1998db3\Final\Final On: 08-Mar-2022 12:27 (GMT)

**16.2.6.1 Listing of Assay Data – Subjects 12 Through 25 Years of Age**

<b>Age Group (Years)</b>	<b>Vaccine Group (as Randomized)</b>	<b>Subject</b>	<b>Dose/ Sampling Time Point</b>	<b>Date of Sample</b>	<b>Rel Day<sup>a</sup></b>	<b>NT50 (Titer)</b>
		C4591001 1009 10091234	1/Prevax	21OCT2020	1	10
			2/1 Month	16DEC2020	36	5924
		C4591001 1009 10091250	2/1 Month	11DEC2020	29	1157
		C4591001 1009 10091265	1/Prevax	01DEC2020	1	10
		C4591001 1009 10091270	1/Prevax	01DEC2020	1	10
			2/1 Month	20JAN2021	29	1373
		C4591001 1009 10091272	1/Prevax	02DEC2020	1	10
			2/1 Month	19JAN2021	29	1021
		C4591001 1009 10091280	1/Prevax	03DEC2020	1	10
		C4591001 1009 10091281	1/Prevax	03DEC2020	1	10
		C4591001 1009 10091284	2/1 Month	27JAN2021	36	500
		C4591001 1009 10091298	2/1 Month	25JAN2021	29	1087
		C4591001 1009 10091310	1/Prevax	09DEC2020	1	10
			2/1 Month	01FEB2021	35	1450
		C4591001 1009 10091313	1/Prevax	09DEC2020	1	10
			2/1 Month	02FEB2021	36	719
		C4591001 1009 10091315	1/Prevax	09DEC2020	1	10
			2/1 Month	29JAN2021	33	1998
		C4591001 1009 10091318	1/Prevax	10DEC2020	1	10
			2/1 Month	27JAN2021	30	1173
		C4591001 1009 10091319	1/Prevax	10DEC2020	1	10
			2/1 Month	02FEB2021	36	735
		C4591001 1009 10091321	1/Prevax	10DEC2020	1	10
			2/1 Month	29JAN2021	31	1745
		C4591001 1009 10091322	1/Prevax	10DEC2020	1	10
			2/1 Month	28JAN2021	30	1683

090177e1998db3\Final\Final On: 08-Mar-2022 12:27 (GMT)

**16.2.6.1 Listing of Assay Data – Subjects 12 Through 25 Years of Age**

<b>Age Group (Years)</b>	<b>Vaccine Group (as Randomized)</b>	<b>Subject</b>	<b>Dose/ Sampling Time Point</b>	<b>Date of Sample</b>	<b>Rel Day<sup>a</sup></b>	<b>NT50 (Titer)</b>
		C4591001 1009 10091331	1/Prevax	11DEC2020	1	10
			2/1 Month	29JAN2021	31	1549
		C4591001 1009 10091332	1/Prevax	11DEC2020	1	10
			2/1 Month	29JAN2021	31	1345
		C4591001 1009 10091335	1/Prevax	11DEC2020	1	10
			2/1 Month	29JAN2021	30	911
		C4591001 1009 10091342	2/1 Month	05FEB2021	33	860
		C4591001 1009 10091348	1/Prevax	15DEC2020	1	10
			2/1 Month	05FEB2021	31	666
		C4591001 1009 10091351	1/Prevax	16DEC2020	1	10
			2/1 Month	03FEB2021	29	905
		C4591001 1009 10091354	1/Prevax	16DEC2020	1	10
		C4591001 1009 10091355	1/Prevax	16DEC2020	1	10
			2/1 Month	11FEB2021	35	2648
		C4591001 1009 10091358	1/Prevax	17DEC2020	1	10
			2/1 Month	05FEB2021	31	6771
		C4591001 1009 10091360	1/Prevax	17DEC2020	1	10
			2/1 Month	03FEB2021	29	1416
		C4591001 1009 10091362	1/Prevax	17DEC2020	1	10
			2/1 Month	08FEB2021	29	1543
		C4591001 1009 10091364	2/1 Month	16FEB2021	29	2056
		C4591001 1013 10131822	1/Prevax	30NOV2020	1	10
		C4591001 1013 10131828	1/Prevax	02DEC2020	1	10
		C4591001 1013 10131836	1/Prevax	02DEC2020	1	10
			2/1 Month	19JAN2021	29	1012
		C4591001 1013 10131843	2/1 Month	27JAN2021	37	1034

090177e1998db3\Final\Final On: 08-Mar-2022 12:27 (GMT)



**16.2.6.1 Listing of Assay Data – Subjects 12 Through 25 Years of Age**

Age Group (Years)	Vaccine Group (as Randomized)	Subject	Dose/ Sampling Time Point	Date of Sample	Rel Day <sup>a</sup>	NT50 (Titer)
		C4591001 1013 10131845	1/Prevax	03DEC2020	1	10
			2/1 Month	21JAN2021	30	1471
		C4591001 1013 10131850	1/Prevax	03DEC2020	1	10
		C4591001 1013 10131855	1/Prevax	08DEC2020	1	10
		C4591001 1016 10161325	1/Prevax	19OCT2020	1	10
			2/1 Month	08DEC2020	29	10
		C4591001 1016 10161332	1/Prevax	21OCT2020	1	10
			2/1 Month	07DEC2020	29	1328
		C4591001 1016 10161339	1/Prevax	22OCT2020	1	10
			2/1 Month	09DEC2020	30	1677
		C4591001 1016 10161350	1/Prevax	30NOV2020	1	10
			2/1 Month	18JAN2021	29	1128
		C4591001 1016 10161356	1/Prevax	02DEC2020	1	10
		C4591001 1016 10161362	1/Prevax	04DEC2020	1	103
			2/1 Month	26JAN2021	30	4809
		C4591001 1016 10161363	1/Prevax	08DEC2020	1	130
			2/1 Month	26JAN2021	30	5530
		C4591001 1016 10161364	1/Prevax	09DEC2020	1	10
			2/1 Month	04FEB2021	36	1330
		C4591001 1039 10391247	1/Prevax	01DEC2020	1	10
			2/1 Month	19JAN2021	30	1541
		C4591001 1039 10391255	1/Prevax	07DEC2020	1	10
			2/1 Month	27JAN2021	30	2905
		C4591001 1039 10391272	1/Prevax	09DEC2020	1	10
			2/1 Month	25JAN2021	29	664
		C4591001 1039 10391276	1/Prevax	16DEC2020	1	10

090177e1998db3\Final\Final On: 08-Mar-2022 12:27 (GMT)

**16.2.6.1 Listing of Assay Data – Subjects 12 Through 25 Years of Age**

<b>Age Group (Years)</b>	<b>Vaccine Group (as Randomized)</b>	<b>Subject</b>	<b>Dose/ Sampling Time Point</b>	<b>Date of Sample</b>	<b>Rel Day<sup>a</sup></b>	<b>NT50 (Titer)</b>
			2/1 Month	05FEB2021	32	1472
		C4591001 1039 10391281	1/Prevax	17DEC2020	1	10
			2/1 Month	02FEB2021	29	551
		C4591001 1039 10391282	1/Prevax	18DEC2020	1	10
			2/1 Month	05FEB2021	29	1197
		C4591001 1039 10391284	1/Prevax	18DEC2020	1	10
			2/1 Month	04FEB2021	29	1202
		C4591001 1039 10391286	1/Prevax	18DEC2020	1	10
			2/1 Month	05FEB2021	29	776
		C4591001 1044 10441255	1/Prevax	01DEC2020	1	10
			2/1 Month	18JAN2021	29	4251
		C4591001 1044 10441263	1/Prevax	07DEC2020	1	10
			2/1 Month	25JAN2021	29	2680
		C4591001 1044 10441268	1/Prevax	08DEC2020	1	776
			2/1 Month	25JAN2021	29	962
		C4591001 1044 10441276	1/Prevax	09DEC2020	1	10
			2/1 Month	25JAN2021	28	1606
		C4591001 1044 10441278	1/Prevax	09DEC2020	1	10
			2/1 Month	27JAN2021	30	1422
		C4591001 1044 10441285	1/Prevax	10DEC2020	1	10
			2/1 Month	29JAN2021	31	1519
		C4591001 1044 10441291	1/Prevax	17DEC2020	1	10
			2/1 Month	03FEB2021	29	682
		C4591001 1044 10441295	1/Prevax	18DEC2020	1	10
		C4591001 1057 10571378	1/Prevax	07DEC2020	1	10
		C4591001 1057 10571395	1/Prevax	09DEC2020	1	10

090177e1998db3\Final\Final On: 08-Mar-2022 12:27 (GMT)

**16.2.6.1 Listing of Assay Data – Subjects 12 Through 25 Years of Age**

<b>Age Group (Years)</b>	<b>Vaccine Group (as Randomized)</b>	<b>Subject</b>	<b>Dose/ Sampling Time Point</b>	<b>Date of Sample</b>	<b>Rel Day<sup>a</sup></b>	<b>NT50 (Titer)</b>
			2/1 Month	17FEB2021	35	849
		C4591001 1057 10571403	2/1 Month	02FEB2021	30	5402
		C4591001 1057 10571409	1/Prevax	17DEC2020	1	10
		C4591001 1057 10571412	1/Prevax	17DEC2020	1	210
		C4591001 1066 10661395	2/1 Month	19JAN2021	30	743
		C4591001 1066 10661402	1/Prevax	02DEC2020	1	10
			2/1 Month	20JAN2021	31	1805
		C4591001 1066 10661408	1/Prevax	08DEC2020	1	15
		C4591001 1066 10661409	2/1 Month	26JAN2021	30	2477
		C4591001 1066 10661420	1/Prevax	17DEC2020	1	10
			2/1 Month	03FEB2021	30	2029
		C4591001 1077 10771274	1/Prevax	03DEC2020	1	10
		C4591001 1077 10771279	2/1 Month	02FEB2021	30	10
		C4591001 1077 10771284	1/Prevax	15DEC2020	1	10
			2/1 Month	03FEB2021	29	10
		C4591001 1077 10771292	2/1 Month	10FEB2021	36	841
		C4591001 1084 10841546	1/Prevax	18DEC2020	1	10
			2/1 Month	05FEB2021	31	906
		C4591001 1091 10911394	1/Prevax	02DEC2020	1	10
			2/1 Month	20JAN2021	31	1322
		C4591001 1091 10911395	2/1 Month	20JAN2021	31	1142
		C4591001 1091 10911399	1/Prevax	04DEC2020	1	10
			2/1 Month	04FEB2021	29	3079
		C4591001 1091 10911413	1/Prevax	09DEC2020	1	10
		C4591001 1091 10911416	1/Prevax	10DEC2020	1	10
			2/1 Month	27JAN2021	29	3214

090177e1998db3\Final\Final On: 08-Mar-2022 12:27 (GMT)

**16.2.6.1 Listing of Assay Data – Subjects 12 Through 25 Years of Age**

<b>Age Group (Years)</b>	<b>Vaccine Group (as Randomized)</b>	<b>Subject</b>	<b>Dose/ Sampling Time Point</b>	<b>Date of Sample</b>	<b>Rel Day<sup>a</sup></b>	<b>NT50 (Titer)</b>
		C4591001 1091 10911420	2/1 Month	27JAN2021	29	1278
		C4591001 1091 10911436	2/1 Month	04FEB2021	30	910
		C4591001 1091 10911440	2/1 Month	08FEB2021	32	986
		C4591001 1123 11231439	1/Prevax	08DEC2020	1	10
		C4591001 1123 11231446	1/Prevax	09DEC2020	1	10
			2/1 Month	27JAN2021	29	890
		C4591001 1123 11231447	2/1 Month	01FEB2021	35	900
		C4591001 1123 11231455	2/1 Month	02FEB2021	30	1196
		C4591001 1123 11231458	1/Prevax	16DEC2020	1	10
			2/1 Month	01FEB2021	29	1312
		C4591001 1123 11231459	1/Prevax	16DEC2020	1	10
			2/1 Month	01FEB2021	29	1319
		C4591001 1124 11241238	1/Prevax	14DEC2020	1	10
			2/1 Month	03FEB2021	29	1576
		C4591001 1124 11241239	1/Prevax	14DEC2020	1	10
			2/1 Month	03FEB2021	29	1779
		C4591001 1124 11241243	2/1 Month	09FEB2021	36	2127
		C4591001 1124 11241249	1/Prevax	16DEC2020	1	10
		C4591001 1124 11241251	1/Prevax	18DEC2020	1	10
			2/1 Month	05FEB2021	29	7898
		C4591001 1124 11241254	2/1 Month	10FEB2021	34	1423
		C4591001 1126 11261229	1/Prevax	30NOV2020	1	10
			2/1 Month	18JAN2021	29	1085
		C4591001 1126 11261241	1/Prevax	02DEC2020	1	10
			2/1 Month	20JAN2021	31	823
		C4591001 1126 11261243	2/1 Month	22JAN2021	33	1754

090177e1998db3\Final\Final On: 08-Mar-2022 12:27 (GMT)

**16.2.6.1 Listing of Assay Data – Subjects 12 Through 25 Years of Age**

Age Group (Years)	Vaccine Group (as Randomized)	Subject	Dose/ Sampling Time Point	Date of Sample	Rel Day <sup>a</sup>	NT50 (Titer)
		C4591001 1126 11261246	1/Prevax	02DEC2020	1	10
			2/1 Month	20JAN2021	29	969
		C4591001 1126 11261255	1/Prevax	03DEC2020	1	10
			2/1 Month	26JAN2021	35	2453
		C4591001 1126 11261269	1/Prevax	14DEC2020	1	10
		C4591001 1126 11261273	1/Prevax	14DEC2020	1	10
		C4591001 1126 11261277	1/Prevax	15DEC2020	1	10
		C4591001 1126 11261278	2/1 Month	02FEB2021	29	373
		C4591001 1126 11261281	1/Prevax	16DEC2020	1	10
			2/1 Month	12FEB2021	37	1681
		C4591001 1126 11261285	1/Prevax	16DEC2020	1	10
			2/1 Month	03FEB2021	29	727
		C4591001 1126 11261291	1/Prevax	17DEC2020	1	10
			2/1 Month	04FEB2021	29	569
		C4591001 1126 11261293	1/Prevax	18DEC2020	1	10
			2/1 Month	05FEB2021	29	1419
		C4591001 1131 11311275	1/Prevax	04DEC2020	1	10
		C4591001 1131 11311278	1/Prevax	08DEC2020	1	10
			2/1 Month	27JAN2021	29	1209
		C4591001 1139 11391144	1/Prevax	11DEC2020	1	10
			2/1 Month	27JAN2021	29	1152
		C4591001 1139 11391145	1/Prevax	01DEC2020	1	10
			2/1 Month	19JAN2021	30	718
		C4591001 1139 11391151	1/Prevax	04DEC2020	1	14
		C4591001 1139 11391155	1/Prevax	04DEC2020	1	10
			2/1 Month	29JAN2021	33	2762

090177e1998db3\Final\Final On: 08-Mar-2022 12:27 (GMT)

**16.2.6.1 Listing of Assay Data – Subjects 12 Through 25 Years of Age**

<b>Age Group (Years)</b>	<b>Vaccine Group (as Randomized)</b>	<b>Subject</b>	<b>Dose/ Sampling Time Point</b>	<b>Date of Sample</b>	<b>Rel Day<sup>a</sup></b>	<b>NT50 (Titer)</b>
		C4591001 1139 11391156	1/Prevax	07DEC2020	1	10
		C4591001 1139 11391161	1/Prevax	08DEC2020	1	10
			2/1 Month	01FEB2021	35	1041
		C4591001 1139 11391162	1/Prevax	08DEC2020	1	10
			2/1 Month	01FEB2021	35	788
		C4591001 1139 11391165	2/1 Month	03FEB2021	36	542
		C4591001 1139 11391178	1/Prevax	18DEC2020	1	10
			2/1 Month	05FEB2021	29	464
		C4591001 1139 11391179	1/Prevax	18DEC2020	1	10
			2/1 Month	05FEB2021	29	573
		C4591001 1140 11401328	1/Prevax	14DEC2020	1	10
			2/1 Month	05FEB2021	32	884
		C4591001 1140 11401332	1/Prevax	16DEC2020	1	10
			2/1 Month	03FEB2021	29	2191
		C4591001 1140 11401336	1/Prevax	17DEC2020	1	10
		C4591001 1140 11401337	1/Prevax	17DEC2020	1	10
		C4591001 1142 11421319	1/Prevax	01DEC2020	1	10
		C4591001 1142 11421330	1/Prevax	04DEC2020	1	10
		C4591001 1142 11421343	1/Prevax	08DEC2020	1	10
		C4591001 1142 11421346	2/1 Month	27JAN2021	30	1553
		C4591001 1142 11421350	2/1 Month	02FEB2021	35	2271
		C4591001 1142 11421353	2/1 Month	29JAN2021	30	1365
		C4591001 1142 11421360	2/1 Month	01FEB2021	29	1463
		C4591001 1142 11421362	2/1 Month	02FEB2021	30	1149
		C4591001 1147 11471262	1/Prevax	12DEC2020	1	10
			2/1 Month	06FEB2021	34	786

090177e1998db3\Final\Final On: 08-Mar-2022 12:27 (GMT)

**16.2.6.1 Listing of Assay Data – Subjects 12 Through 25 Years of Age**

<b>Age Group (Years)</b>	<b>Vaccine Group (as Randomized)</b>	<b>Subject</b>	<b>Dose/ Sampling Time Point</b>	<b>Date of Sample</b>	<b>Rel Day<sup>a</sup></b>	<b>NT50 (Titer)</b>
		C4591001 1147 11471268	1/Prevax	05DEC2020	1	10
			2/1 Month	30JAN2021	34	5724
		C4591001 1147 11471277	1/Prevax	08DEC2020	1	10
			2/1 Month	30JAN2021	34	3085
		C4591001 1147 11471279	2/1 Month	30JAN2021	34	1586
		C4591001 1147 11471282	1/Prevax	12DEC2020	1	10
			2/1 Month	08FEB2021	36	2460
		C4591001 1150 11501118	1/Prevax	15OCT2020	1	10
			2/1 Month	02DEC2020	30	7031
		C4591001 1150 11501119	1/Prevax	15OCT2020	1	10
		C4591001 1150 11501127	1/Prevax	19OCT2020	1	10
			2/1 Month	09DEC2020	29	773
		C4591001 1150 11501130	1/Prevax	20OCT2020	1	110
			2/1 Month	11DEC2020	33	5987
		C4591001 1150 11501132	1/Prevax	20OCT2020	1	10
			2/1 Month	11DEC2020	33	2148
		C4591001 1150 11501133	1/Prevax	21OCT2020	1	10
			2/1 Month	08DEC2020	29	3119
		C4591001 1150 11501180	1/Prevax	08DEC2020	1	10
			2/1 Month	27JAN2021	29	849
		C4591001 1150 11501186	1/Prevax	09DEC2020	1	10
			2/1 Month	26JAN2021	29	985
		C4591001 1150 11501187	1/Prevax	09DEC2020	1	10
			2/1 Month	26JAN2021	30	1582
		C4591001 1150 11501191	1/Prevax	10DEC2020	1	10
			2/1 Month	27JAN2021	29	2704

090177e1998db3\Final\Final On: 08-Mar-2022 12:27 (GMT)

**16.2.6.1 Listing of Assay Data – Subjects 12 Through 25 Years of Age**

<b>Age Group (Years)</b>	<b>Vaccine Group (as Randomized)</b>	<b>Subject</b>	<b>Dose/ Sampling Time Point</b>	<b>Date of Sample</b>	<b>Rel Day<sup>a</sup></b>	<b>NT50 (Titer)</b>
		C4591001 1150 11501194	1/Prevax	10DEC2020	1	10
			2/1 Month	02FEB2021	34	534
		C4591001 1150 11501197	1/Prevax	11DEC2020	1	10
			2/1 Month	28JAN2021	30	1129
		C4591001 1150 11501208	1/Prevax	14DEC2020	1	10
			2/1 Month	01FEB2021	29	2309
		C4591001 1150 11501211	1/Prevax	15DEC2020	1	10
			2/1 Month	04FEB2021	29	445
		C4591001 1150 11501216	1/Prevax	16DEC2020	1	10
			2/1 Month	03FEB2021	29	1142
		C4591001 1150 11501217	1/Prevax	16DEC2020	1	10
			2/1 Month	03FEB2021	30	4893
		C4591001 1150 11501221	1/Prevax	17DEC2020	1	10
			2/1 Month	12FEB2021	36	262
		C4591001 1150 11501226	1/Prevax	17DEC2020	1	10
			2/1 Month	08FEB2021	32	1910
		C4591001 1150 11501227	2/1 Month	08FEB2021	34	974
		C4591001 1152 11521605	1/Prevax	02DEC2020	1	10
			2/1 Month	19JAN2021	29	2146
		C4591001 1152 11521614	1/Prevax	03DEC2020	1	10
			2/1 Month	19JAN2021	29	1241
		C4591001 1152 11521619	1/Prevax	03DEC2020	1	10
			2/1 Month	25JAN2021	35	1721
		C4591001 1152 11521625	1/Prevax	04DEC2020	1	10
		C4591001 1152 11521635	2/1 Month	25JAN2021	29	1164
		C4591001 1152 11521636	2/1 Month	25JAN2021	29	1086

090177e1998db3\Final\Final On: 08-Mar-2022 12:27 (GMT)



**16.2.6.1 Listing of Assay Data – Subjects 12 Through 25 Years of Age**

<b>Age Group (Years)</b>	<b>Vaccine Group (as Randomized)</b>	<b>Subject</b>	<b>Dose/ Sampling Time Point</b>	<b>Date of Sample</b>	<b>Rel Day<sup>a</sup></b>	<b>NT50 (Titer)</b>
		C4591001 1152 11521648	2/1 Month	28JAN2021	32	1471
		C4591001 1152 11521650	1/Prevax	08DEC2020	1	10
			2/1 Month	25JAN2021	29	836
		C4591001 1152 11521655	1/Prevax	09DEC2020	1	10
			2/1 Month	26JAN2021	29	550
		C4591001 1152 11521656	1/Prevax	10DEC2020	1	10
		C4591001 1152 11521657	1/Prevax	10DEC2020	1	10
		C4591001 1152 11521671	2/1 Month	01FEB2021	29	2569
		C4591001 1152 11521674	2/1 Month	08FEB2021	32	866
		C4591001 1152 11521677	1/Prevax	15DEC2020	1	10
			2/1 Month	01FEB2021	29	3484
		C4591001 1152 11521679	1/Prevax	15DEC2020	1	19
		C4591001 1152 11521689	1/Prevax	16DEC2020	1	10
		C4591001 1152 11521692	1/Prevax	16DEC2020	1	10
			2/1 Month	08FEB2021	34	1820
		C4591001 1152 11521694	1/Prevax	16DEC2020	1	10
			2/1 Month	03FEB2021	29	1327
		C4591001 1152 11521697	1/Prevax	18DEC2020	1	10
		C4591001 1152 11521699	2/1 Month	10FEB2021	34	1710
		C4591001 1156 11561243	1/Prevax	15OCT2020	1	10
			2/1 Month	02DEC2020	30	315
		C4591001 1156 11561245	1/Prevax	15OCT2020	1	10
			2/1 Month	02DEC2020	30	862
		C4591001 1156 11561249	1/Prevax	16OCT2020	1	10
			2/1 Month	03DEC2020	30	887
		C4591001 1156 11561250	1/Prevax	16OCT2020	1	10

090177e1998db3\Final\Final On: 08-Mar-2022 12:27 (GMT)

**16.2.6.1 Listing of Assay Data – Subjects 12 Through 25 Years of Age**

<b>Age Group (Years)</b>	<b>Vaccine Group (as Randomized)</b>	<b>Subject</b>	<b>Dose/ Sampling Time Point</b>	<b>Date of Sample</b>	<b>Rel Day<sup>a</sup></b>	<b>NT50 (Titer)</b>
			2/1 Month	02DEC2020	29	115
		C4591001 1156 11561257	1/Prevax	20OCT2020	1	10
		C4591001 1156 11561259	1/Prevax	20OCT2020	1	10
			2/1 Month	09DEC2020	30	894
		C4591001 1156 11561264	2/1 Month	14DEC2020	35	1483
		C4591001 1156 11561304	1/Prevax	30NOV2020	1	10
		C4591001 1156 11561310	1/Prevax	01DEC2020	1	10
			2/1 Month	05FEB2021	30	1842
		C4591001 1156 11561313	2/1 Month	20JAN2021	31	1231
		C4591001 1156 11561314	2/1 Month	22JAN2021	31	3575
		C4591001 1156 11561317	2/1 Month	26JAN2021	30	1194
		C4591001 1156 11561321	1/Prevax	07DEC2020	1	10
		C4591001 1156 11561324	1/Prevax	07DEC2020	1	10
		C4591001 1235 12351233	2/1 Month	19JAN2021	30	877
		C4591001 1235 12351242	2/1 Month	28JAN2021	32	1058
		C4591001 1235 12351245	1/Prevax	08DEC2020	1	10
			2/1 Month	29JAN2021	31	1364
		C4591001 1235 12351246	1/Prevax	15DEC2020	1	10
		C4591001 1235 12351250	2/1 Month	02FEB2021	29	1385
		C4591001 1270 12701184	1/Prevax	02DEC2020	1	10
			2/1 Month	20JAN2021	29	1735
		C4591001 1270 12701187	1/Prevax	03DEC2020	1	10
		C4591001 1270 12701200	1/Prevax	10DEC2020	1	10
			2/1 Month	27JAN2021	30	2018
		C4591001 1270 12701210	1/Prevax	16DEC2020	1	10
			2/1 Month	03FEB2021	31	647

090177e1998db3\Final\Final On: 08-Mar-2022 12:27 (GMT)

**16.2.6.1 Listing of Assay Data – Subjects 12 Through 25 Years of Age**

Age Group (Years)	Vaccine Group (as Randomized)	Subject	Dose/ Sampling Time Point	Date of Sample	Rel Day <sup>a</sup>	NT50 (Titer)
	Placebo	C4591001 1270 12701214	2/1 Month	09FEB2021	33	1900
		C4591001 1270 12701220	2/1 Month	08FEB2021	32	1111
		C4591001 1005 10051419	2/1 Month	01FEB2021	29	10
		C4591001 1006 10061212	1/Prevax	04DEC2020	1	10
		C4591001 1006 10061248	1/Prevax	11DEC2020	1	10
		C4591001 1007 10071481	1/Prevax	01DEC2020	1	10
			2/1 Month	20JAN2021	30	10
		C4591001 1007 10071541	1/Prevax	09DEC2020	1	10
			2/1 Month	28JAN2021	30	10
		C4591001 1007 10071560	1/Prevax	14DEC2020	1	10
			2/1 Month	02FEB2021	29	10
		C4591001 1007 10071562	1/Prevax	14DEC2020	1	251
			2/1 Month	01FEB2021	29	285
		C4591001 1008 10081808	1/Prevax	18DEC2020	1	10
			2/1 Month	12FEB2021	36	10
		C4591001 1009 10091233	1/Prevax	21OCT2020	1	10
			2/1 Month	14DEC2020	33	10
		C4591001 1009 10091273	1/Prevax	02DEC2020	1	10
			2/1 Month	19JAN2021	29	10
		C4591001 1009 10091314	1/Prevax	09DEC2020	1	10
		2/1 Month	01FEB2021	34	68	
	C4591001 1009 10091317	2/1 Month	27JAN2021	30	10	
	C4591001 1009 10091341	2/1 Month	05FEB2021	33	10	
	C4591001 1013 10131848	1/Prevax	03DEC2020	1	10	
		2/1 Month	20JAN2021	30	10	
	C4591001 1013 10131867	1/Prevax	17DEC2020	1	10	

090177e1998db3\Final\Final On: 08-Mar-2022 12:27 (GMT)

**16.2.6.1 Listing of Assay Data – Subjects 12 Through 25 Years of Age**

Age Group (Years)	Vaccine Group (as Randomized)	Subject	Dose/ Sampling Time Point	Date of Sample	Rel Day <sup>a</sup>	NT50 (Titer)
			2/1 Month	03FEB2021	30	10
		C4591001 1016 10161324	1/Prevax	19OCT2020	1	10
			2/1 Month	07DEC2020	29	10
		C4591001 1016 10161340	1/Prevax	22OCT2020	1	10
			2/1 Month	09DEC2020	30	10
		C4591001 1016 10161361	1/Prevax	04DEC2020	1	10
			2/1 Month	22JAN2021	31	67
		C4591001 1039 10391256	1/Prevax	07DEC2020	1	10
			2/1 Month	27JAN2021	30	10
		C4591001 1044 10441260	1/Prevax	01DEC2020	1	10
			2/1 Month	20JAN2021	30	10
		C4591001 1057 10571400	1/Prevax	11DEC2020	1	37
		C4591001 1066 10661394	2/1 Month	27JAN2021	29	128
		C4591001 1066 10661405	2/1 Month	21JAN2021	31	10
		C4591001 1091 10911400	1/Prevax	04DEC2020	1	10
			2/1 Month	27JAN2021	30	10
		C4591001 1091 10911407	1/Prevax	08DEC2020	1	10
			2/1 Month	25JAN2021	29	621
		C4591001 1091 10911424	1/Prevax	15DEC2020	1	18
			2/1 Month	01FEB2021	29	27
		C4591001 1123 11231431	1/Prevax	04DEC2020	1	10
		C4591001 1123 11231438	1/Prevax	08DEC2020	1	10
		C4591001 1123 11231441	1/Prevax	09DEC2020	1	10
		C4591001 1123 11231448	1/Prevax	11DEC2020	1	10
		C4591001 1124 11241248	2/1 Month	03FEB2021	29	10
		C4591001 1126 11261267	1/Prevax	14DEC2020	1	10

090177e1998db3\Final\Final On: 08-Mar-2022 12:27 (GMT)

**16.2.6.1 Listing of Assay Data – Subjects 12 Through 25 Years of Age**

<b>Age Group (Years)</b>	<b>Vaccine Group (as Randomized)</b>	<b>Subject</b>	<b>Dose/ Sampling Time Point</b>	<b>Date of Sample</b>	<b>Rel Day<sup>a</sup></b>	<b>NT50 (Titer)</b>
			2/1 Month	03FEB2021	31	10
		C4591001 1140 11401327	1/Prevax	11DEC2020	1	10
			2/1 Month	02FEB2021	29	10
		C4591001 1140 11401335	1/Prevax	17DEC2020	1	10
			2/1 Month	10FEB2021	36	10
		C4591001 1142 11421335	1/Prevax	04DEC2020	1	10
			2/1 Month	22JAN2021	31	10
		C4591001 1150 11501179	1/Prevax	07DEC2020	1	10
			2/1 Month	29JAN2021	33	10
		C4591001 1150 11501210	1/Prevax	15DEC2020	1	10
			2/1 Month	04FEB2021	29	10
		C4591001 1152 11521637	1/Prevax	07DEC2020	1	10
			2/1 Month	25JAN2021	29	10
		C4591001 1152 11521661	1/Prevax	10DEC2020	1	10
		C4591001 1152 11521667	1/Prevax	11DEC2020	1	10
		C4591001 1152 11521686	1/Prevax	16DEC2020	1	10
		C4591001 1152 11521701	2/1 Month	03FEB2021	29	10
		C4591001 1156 11561246	1/Prevax	22OCT2020	1	10
			2/1 Month	08DEC2020	29	10
		C4591001 1156 11561311	1/Prevax	02DEC2020	1	10
		C4591001 1270 12701173	1/Prevax	30NOV2020	1	10
			2/1 Month	18JAN2021	29	10
		C4591001 1270 12701174	1/Prevax	30NOV2020	1	10
			2/1 Month	18JAN2021	29	10
		C4591001 1270 12701218	1/Prevax	17DEC2020	1	10
			2/1 Month	05FEB2021	30	10

090177e1998db3\Final\Final On: 08-Mar-2022 12:27 (GMT)

**16.2.6.1 Listing of Assay Data – Subjects 12 Through 25 Years of Age**

<b>Age Group (Years)</b>	<b>Vaccine Group (as Randomized)</b>	<b>Subject</b>	<b>Dose/ Sampling Time Point</b>	<b>Date of Sample</b>	<b>Rel Day<sup>a</sup></b>	<b>NT50 (Titer)</b>
16-25	BNT162b2 (30 µg)	C4591001 1001 10011085	1/Prevax	28JUL2020	1	10
			2/1 Month	21SEP2020	34	172
		C4591001 1005 10051400	1/Prevax	03NOV2020	1	10
			2/1 Month	21DEC2020	29	707
		C4591001 1005 10051416	1/Prevax	16DEC2020	1	10
			2/1 Month	10FEB2021	36	502
		C4591001 1006 10061137	1/Prevax	01SEP2020	1	10
		C4591001 1006 10061162	1/Prevax	25SEP2020	1	10
			2/1 Month	18NOV2020	34	1223
		C4591001 1006 10061170	1/Prevax	05OCT2020	1	10
			2/1 Month	25NOV2020	29	1617
		C4591001 1006 10061192	2/1 Month	26JAN2021	36	891
		C4591001 1006 10061202	1/Prevax	03DEC2020	1	10
			2/1 Month	19JAN2021	29	1184
		C4591001 1006 10061225	1/Prevax	07DEC2020	1	10
			2/1 Month	29JAN2021	33	854
		C4591001 1007 10071289	1/Prevax	27AUG2020	1	10
			2/1 Month	15OCT2020	29	737
		C4591001 1007 10071385	1/Prevax	20OCT2020	1	10
			2/1 Month	08DEC2020	29	1033
C4591001 1007 10071434	1/Prevax	27OCT2020	1	10		
C4591001 1007 10071439	2/1 Month	21DEC2020	33	668		
C4591001 1007 10071447	1/Prevax	11NOV2020	1	10		
C4591001 1007 10071454	1/Prevax	12NOV2020	1	10		
C4591001 1007 10071473	1/Prevax	07DEC2020	1	10		
C4591001 1008 10081558	2/1 Month	25NOV2020	34	466		

090177e1998db3\Final\Final On: 08-Mar-2022 12:27 (GMT)

**16.2.6.1 Listing of Assay Data – Subjects 12 Through 25 Years of Age**

<b>Age Group (Years)</b>	<b>Vaccine Group (as Randomized)</b>	<b>Subject</b>	<b>Dose/ Sampling Time Point</b>	<b>Date of Sample</b>	<b>Rel Day<sup>a</sup></b>	<b>NT50 (Titer)</b>
		C4591001 1008 10081747	2/1 Month	08JAN2021	29	968
		C4591001 1009 10091028	1/Prevax	12AUG2020	1	10
			2/1 Month	05OCT2020	36	775
		C4591001 1009 10091070	1/Prevax	19AUG2020	1	10
			2/1 Month	12OCT2020	34	267
		C4591001 1009 10091217	1/Prevax	16OCT2020	1	10
			2/1 Month	04DEC2020	29	668
		C4591001 1009 10091256	2/1 Month	22DEC2020	34	2293
		C4591001 1011 10111215	1/Prevax	19OCT2020	1	10
			2/1 Month	09DEC2020	29	6340
		C4591001 1013 10131002	1/Prevax	28JUL2020	1	10
			2/1 Month	14SEP2020	29	1040
		C4591001 1013 10131026	1/Prevax	30JUL2020	1	10
			2/1 Month	30SEP2020	42	654
		C4591001 1013 10131059	1/Prevax	03AUG2020	1	10
			2/1 Month	21SEP2020	28	697
		C4591001 1013 10131171	1/Prevax	13AUG2020	1	10
			2/1 Month	01OCT2020	29	1364
		C4591001 1013 10131276	1/Prevax	24AUG2020	1	10
		C4591001 1013 10131653	1/Prevax	07OCT2020	1	10
		C4591001 1013 10131829	1/Prevax	02DEC2020	1	10
		C4591001 1015 10151081	1/Prevax	21AUG2020	1	10
			2/1 Month	09OCT2020	29	256
		C4591001 1015 10151150	1/Prevax	31AUG2020	1	10
		C4591001 1016 10161010	1/Prevax	30JUL2020	1	10
			2/1 Month	22SEP2020	35	461

090177e1998db3\Final\Final On: 08-Mar-2022 12:27 (GMT)

**16.2.6.1 Listing of Assay Data – Subjects 12 Through 25 Years of Age**

<b>Age Group (Years)</b>	<b>Vaccine Group (as Randomized)</b>	<b>Subject</b>	<b>Dose/ Sampling Time Point</b>	<b>Date of Sample</b>	<b>Rel Day<sup>a</sup></b>	<b>NT50 (Titer)</b>
		C4591001 1016 10161028	1/Prevax	03AUG2020	1	10
			2/1 Month	06OCT2020	29	982
		C4591001 1016 10161284	1/Prevax	11SEP2020	1	10
			2/1 Month	29OCT2020	30	483
		C4591001 1016 10161288	1/Prevax	17SEP2020	1	17
			2/1 Month	05NOV2020	31	1041
		C4591001 1016 10161289	1/Prevax	18SEP2020	1	10
			2/1 Month	06NOV2020	31	468
		C4591001 1016 10161293	1/Prevax	21SEP2020	1	10
			2/1 Month	09NOV2020	29	1484
		C4591001 1016 10161295	1/Prevax	22SEP2020	1	10
			2/1 Month	10NOV2020	29	1716
		C4591001 1018 10181007	1/Prevax	29JUL2020	1	10
			2/1 Month	23SEP2020	36	511
		C4591001 1018 10181194	1/Prevax	20AUG2020	1	10
			2/1 Month	19OCT2020	33	844
		C4591001 1022 10221112	1/Prevax	02SEP2020	1	10
			2/1 Month	22OCT2020	29	1593
		C4591001 1028 10281029	1/Prevax	20AUG2020	1	10
			2/1 Month	08OCT2020	29	1084
		C4591001 1028 10281053	1/Prevax	25AUG2020	1	10
			2/1 Month	14OCT2020	29	1673
		C4591001 1030 10301072	1/Prevax	11SEP2020	1	10
			2/1 Month	30OCT2020	29	460
		C4591001 1038 10381006	1/Prevax	19AUG2020	1	10
			2/1 Month	07OCT2020	29	552

090177e1998db3\Final\Final On: 08-Mar-2022 12:27 (GMT)



**16.2.6.1 Listing of Assay Data – Subjects 12 Through 25 Years of Age**

<b>Age Group (Years)</b>	<b>Vaccine Group (as Randomized)</b>	<b>Subject</b>	<b>Dose/ Sampling Time Point</b>	<b>Date of Sample</b>	<b>Rel Day<sup>a</sup></b>	<b>NT50 (Titer)</b>
		C4591001 1042 10421004	1/Prevax	29JUL2020	1	10
			2/1 Month	25SEP2020	36	187
		C4591001 1042 10421114	1/Prevax	17AUG2020	1	10
			2/1 Month	07OCT2020	29	295
		C4591001 1044 10441193	1/Prevax	17OCT2020	1	10
			2/1 Month	03DEC2020	29	1191
		C4591001 1044 10441235	1/Prevax	25NOV2020	1	10
			2/1 Month	18JAN2021	33	1599
		C4591001 1044 10441241	1/Prevax	23NOV2020	1	10
			2/1 Month	13JAN2021	30	1465
		C4591001 1044 10441272	1/Prevax	08DEC2020	1	10
			2/1 Month	29JAN2021	33	746
		C4591001 1046 10461125	1/Prevax	27AUG2020	1	10
			2/1 Month	20OCT2020	34	977
		C4591001 1046 10461171	1/Prevax	02SEP2020	1	10
			2/1 Month	26OCT2020	34	222
		C4591001 1046 10461319	1/Prevax	26OCT2020	1	10
			2/1 Month	14DEC2020	29	612
		C4591001 1046 10461338	1/Prevax	30OCT2020	1	10
			2/1 Month	18DEC2020	29	1517
		C4591001 1046 10461346	1/Prevax	01DEC2020	1	10
		C4591001 1047 10471275	1/Prevax	23SEP2020	1	10
		C4591001 1047 10471306	1/Prevax	02OCT2020	1	10
		C4591001 1054 10541007	1/Prevax	19AUG2020	1	10
			2/1 Month	06OCT2020	29	658
		C4591001 1054 10541090	1/Prevax	01SEP2020	1	10

090177e1998db3\Final\Final On: 08-Mar-2022 12:27 (GMT)

**16.2.6.1 Listing of Assay Data – Subjects 12 Through 25 Years of Age**

<b>Age Group (Years)</b>	<b>Vaccine Group (as Randomized)</b>	<b>Subject</b>	<b>Dose/ Sampling Time Point</b>	<b>Date of Sample</b>	<b>Rel Day<sup>a</sup></b>	<b>NT50 (Titer)</b>
			2/1 Month	20OCT2020	29	905
		C4591001 1055 10551021	1/Prevax	11AUG2020	1	10
			2/1 Month	29SEP2020	30	858
		C4591001 1057 10571044	2/1 Month	07OCT2020	29	164
		C4591001 1057 10571217	1/Prevax	21SEP2020	1	10
			2/1 Month	07DEC2020	56	273
		C4591001 1057 10571234	1/Prevax	23SEP2020	1	10
			2/1 Month	11NOV2020	29	264
		C4591001 1057 10571366	1/Prevax	23NOV2020	1	10
		C4591001 1057 10571368	1/Prevax	23NOV2020	1	83
		C4591001 1066 10661166	1/Prevax	02SEP2020	1	10
			2/1 Month	21OCT2020	29	615
		C4591001 1068 10681098	1/Prevax	03SEP2020	1	10
			2/1 Month	22OCT2020	29	318
		C4591001 1068 10681119	1/Prevax	10SEP2020	1	10
		C4591001 1071 10711233	1/Prevax	19OCT2020	1	10
			2/1 Month	10DEC2020	30	164
		C4591001 1077 10771262	1/Prevax	20OCT2020	1	10
			2/1 Month	07DEC2020	29	258
		C4591001 1077 10771273	1/Prevax	02DEC2020	1	10
			2/1 Month	25JAN2021	35	505
		C4591001 1079 10791288	1/Prevax	16SEP2020	1	10
			2/1 Month	04NOV2020	29	1001
		C4591001 1082 10821014	1/Prevax	03AUG2020	1	10
			2/1 Month	22SEP2020	29	240
		C4591001 1082 10821036	2/1 Month	21SEP2020	28	1333

090177e1998db3\Final\Final On: 08-Mar-2022 12:27 (GMT)

**16.2.6.1 Listing of Assay Data – Subjects 12 Through 25 Years of Age**

<b>Age Group (Years)</b>	<b>Vaccine Group (as Randomized)</b>	<b>Subject</b>	<b>Dose/ Sampling Time Point</b>	<b>Date of Sample</b>	<b>Rel Day<sup>a</sup></b>	<b>NT50 (Titer)</b>
		C4591001 1082 10821196	2/1 Month	30NOV2020	34	903
		C4591001 1082 10821201	1/Prevax	19OCT2020	1	10
			2/1 Month	08DEC2020	30	738
		C4591001 1084 10841423	1/Prevax	18SEP2020	1	66
		C4591001 1085 10851050	1/Prevax	06AUG2020	1	10
			2/1 Month	30SEP2020	29	675
		C4591001 1087 10871214	1/Prevax	26AUG2020	1	10
			2/1 Month	15OCT2020	29	241
		C4591001 1087 10871267	1/Prevax	31AUG2020	1	10
			2/1 Month	19OCT2020	29	217
		C4591001 1087 10871529	1/Prevax	29SEP2020	1	10
			2/1 Month	17NOV2020	29	128
		C4591001 1087 10871565	1/Prevax	15OCT2020	1	10
		C4591001 1088 10881200	1/Prevax	11SEP2020	1	10
		C4591001 1089 10891273	1/Prevax	09SEP2020	1	10
			2/1 Month	30OCT2020	29	1424
		C4591001 1089 10891306	2/1 Month	03NOV2020	30	605
		C4591001 1090 10901031	1/Prevax	03AUG2020	1	10
			2/1 Month	23SEP2020	31	780
		C4591001 1090 10901043	1/Prevax	04AUG2020	1	10
			2/1 Month	23SEP2020	31	2024
		C4591001 1090 10901157	1/Prevax	12AUG2020	1	10
			2/1 Month	02OCT2020	33	594
		C4591001 1090 10901328	1/Prevax	03SEP2020	1	10
		C4591001 1090 10901443	1/Prevax	22SEP2020	1	10
			2/1 Month	13NOV2020	30	271

090177e1998db3\Final\Final On: 08-Mar-2022 12:27 (GMT)

**16.2.6.1 Listing of Assay Data – Subjects 12 Through 25 Years of Age**

<b>Age Group (Years)</b>	<b>Vaccine Group (as Randomized)</b>	<b>Subject</b>	<b>Dose/ Sampling Time Point</b>	<b>Date of Sample</b>	<b>Rel Day<sup>a</sup></b>	<b>NT50 (Titer)</b>
		C4591001 1090 10901517	1/Prevax	20OCT2020	1	10
			2/1 Month	09DEC2020	29	1154
		C4591001 1090 10901559	2/1 Month	22DEC2020	36	529
		C4591001 1091 10911382	1/Prevax	28OCT2020	1	10
			2/1 Month	16DEC2020	29	2243
		C4591001 1091 10911389	1/Prevax	18NOV2020	1	10
		C4591001 1091 10911391	1/Prevax	25NOV2020	1	10
		C4591001 1091 10911401	1/Prevax	04DEC2020	1	10
			2/1 Month	27JAN2021	30	1504
		C4591001 1092 10921146	1/Prevax	02SEP2020	1	10
			2/1 Month	14JAN2021	113	214
		C4591001 1093 10931088	1/Prevax	31AUG2020	1	18
			2/1 Month	19OCT2020	29	1181
		C4591001 1093 10931174	1/Prevax	12OCT2020	1	100
		C4591001 1094 10941069	1/Prevax	28AUG2020	1	10
			2/1 Month	19OCT2020	33	649
		C4591001 1095 10951170	1/Prevax	29AUG2020	1	10
			2/1 Month	16OCT2020	30	10629
		C4591001 1095 10951271	1/Prevax	08OCT2020	1	10
		C4591001 1095 10951315	2/1 Month	12JAN2021	29	1285
		C4591001 1096 10961010	1/Prevax	13AUG2020	1	10
			2/1 Month	29SEP2020	29	169
		C4591001 1096 10961032	1/Prevax	14AUG2020	1	10
		C4591001 1096 10961168	1/Prevax	28AUG2020	1	10
			2/1 Month	21OCT2020	35	633
		C4591001 1096 10961196	1/Prevax	31AUG2020	1	162

090177e1998db3\Final\Final On: 08-Mar-2022 12:27 (GMT)

**16.2.6.1 Listing of Assay Data – Subjects 12 Through 25 Years of Age**

<b>Age Group (Years)</b>	<b>Vaccine Group (as Randomized)</b>	<b>Subject</b>	<b>Dose/ Sampling Time Point</b>	<b>Date of Sample</b>	<b>Rel Day<sup>a</sup></b>	<b>NT50 (Titer)</b>
		C4591001 1096 10961219	2/1 Month	20OCT2020	30	441
		C4591001 1096 10961319	1/Prevax	12SEP2020	1	10
			2/1 Month	02NOV2020	33	424
		C4591001 1096 10961392	1/Prevax	23NOV2020	1	10
		C4591001 1098 10981177	1/Prevax	16SEP2020	1	10
		C4591001 1101 11011033	1/Prevax	10SEP2020	1	71
			2/1 Month	29OCT2020	29	1018
		C4591001 1101 11011062	2/1 Month	04NOV2020	29	1345
		C4591001 1101 11011079	1/Prevax	18SEP2020	1	10
			2/1 Month	06NOV2020	29	1885
		C4591001 1101 11011088	1/Prevax	22SEP2020	1	39
			2/1 Month	12NOV2020	31	1851
		C4591001 1109 11091020	1/Prevax	30JUL2020	1	10
			2/1 Month	15SEP2020	29	386
		C4591001 1109 11091370	1/Prevax	29AUG2020	1	10
			2/1 Month	15OCT2020	29	796
		C4591001 1109 11091391	1/Prevax	01SEP2020	1	10
		C4591001 1111 11111001	1/Prevax	30JUL2020	1	10
			2/1 Month	17SEP2020	29	2220
		C4591001 1111 11111183	1/Prevax	21SEP2020	1	10
		C4591001 1112 11121019	2/1 Month	24SEP2020	34	323
		C4591001 1112 11121217	1/Prevax	03SEP2020	1	10
			2/1 Month	26OCT2020	34	280
		C4591001 1112 11121297	1/Prevax	12OCT2020	1	10
			2/1 Month	30NOV2020	29	399
		C4591001 1114 11141021	1/Prevax	13AUG2020	1	10

090177e1998db3\Final\Final On: 08-Mar-2022 12:27 (GMT)

**16.2.6.1 Listing of Assay Data – Subjects 12 Through 25 Years of Age**

<b>Age Group (Years)</b>	<b>Vaccine Group (as Randomized)</b>	<b>Subject</b>	<b>Dose/ Sampling Time Point</b>	<b>Date of Sample</b>	<b>Rel Day<sup>a</sup></b>	<b>NT50 (Titer)</b>
		C4591001 111611161256	1/Prevax	19SEP2020	1	10
			2/1 Month	12NOV2020	32	879
		C4591001 111611161320	1/Prevax	25SEP2020	1	10
		C4591001 111711171113	2/1 Month	04NOV2020	30	671
		C4591001 111811181017	2/1 Month	05OCT2020	33	745
		C4591001 111811181101	2/1 Month	15OCT2020	29	879
		C4591001 112011201337	1/Prevax	16OCT2020	1	10
			2/1 Month	04JAN2021	60	1180
		C4591001 112311231116	1/Prevax	17AUG2020	1	10
			2/1 Month	07OCT2020	30	1295
		C4591001 112311231381	1/Prevax	15OCT2020	1	10
			2/1 Month	09DEC2020	34	2476
		C4591001 112311231383	1/Prevax	15OCT2020	1	10
			2/1 Month	07DEC2020	33	596
		C4591001 112311231413	2/1 Month	13JAN2021	36	1210
		C4591001 112311231417	1/Prevax	23NOV2020	1	10
		C4591001 112311231423	2/1 Month	18JAN2021	29	475
		C4591001 112311231429	1/Prevax	03DEC2020	1	10
		C4591001 112411241071	1/Prevax	19AUG2020	1	10
			2/1 Month	14OCT2020	35	770
		C4591001 112511251144	1/Prevax	02SEP2020	1	10
			2/1 Month	27OCT2020	29	5632
		C4591001 112511251240	1/Prevax	20NOV2020	1	10
		C4591001 112611261216	2/1 Month	13JAN2021	30	607
		C4591001 112611261231	1/Prevax	30NOV2020	1	10
		C4591001 112611261242	1/Prevax	02DEC2020	1	14

090177e1998db3\Final\Final On: 08-Mar-2022 12:27 (GMT)

**16.2.6.1 Listing of Assay Data – Subjects 12 Through 25 Years of Age**

<b>Age Group (Years)</b>	<b>Vaccine Group (as Randomized)</b>	<b>Subject</b>	<b>Dose/ Sampling Time Point</b>	<b>Date of Sample</b>	<b>Rel Day<sup>a</sup></b>	<b>NT50 (Titer)</b>
			2/1 Month	22JAN2021	33	2069
		C4591001 1127 11271021	2/1 Month	15SEP2020	29	725
		C4591001 1127 11271033	2/1 Month	18SEP2020	31	251
		C4591001 1129 11291262	1/Prevax	23NOV2020	1	10
			2/1 Month	11JAN2021	29	693
		C4591001 1130 11301089	1/Prevax	21OCT2020	1	10
			2/1 Month	09DEC2020	29	130
		C4591001 1131 11311064	1/Prevax	21AUG2020	1	10
		C4591001 1131 11311266	1/Prevax	18NOV2020	1	17
			2/1 Month	11JAN2021	35	1186
		C4591001 1131 11311268	1/Prevax	23NOV2020	1	10
		C4591001 1133 11331485	1/Prevax	21SEP2020	1	10
		C4591001 1133 11331602	2/1 Month	17DEC2020	29	10
		C4591001 1134 11341327	2/1 Month	06NOV2020	36	280
		C4591001 1135 11351088	1/Prevax	08AUG2020	1	10
			2/1 Month	25SEP2020	29	1168
		C4591001 1135 11351113	1/Prevax	13AUG2020	1	10
			2/1 Month	09OCT2020	32	1428
		C4591001 1135 11351216	1/Prevax	26AUG2020	1	10
			2/1 Month	16OCT2020	29	1244
		C4591001 1135 11351355	1/Prevax	15SEP2020	1	311
			2/1 Month	04NOV2020	30	805
		C4591001 1135 11351410	2/1 Month	09NOV2020	29	1697
		C4591001 1136 11361007	1/Prevax	18AUG2020	1	10
			2/1 Month	12OCT2020	32	776
		C4591001 1139 11391141	1/Prevax	24NOV2020	1	10

090177e1998db3\Final\Final On: 08-Mar-2022 12:27 (GMT)

**16.2.6.1 Listing of Assay Data – Subjects 12 Through 25 Years of Age**

<b>Age Group (Years)</b>	<b>Vaccine Group (as Randomized)</b>	<b>Subject</b>	<b>Dose/ Sampling Time Point</b>	<b>Date of Sample</b>	<b>Rel Day<sup>a</sup></b>	<b>NT50 (Titer)</b>
			2/1 Month	14JAN2021	31	2154
		C4591001 1140 11401006	1/Prevax	30JUL2020	1	10
			2/1 Month	16SEP2020	29	627
		C4591001 1141 11411006	1/Prevax	31JUL2020	1	35
		C4591001 1141 11411072	1/Prevax	13AUG2020	1	10
			2/1 Month	02OCT2020	31	362
		C4591001 1141 11411081	1/Prevax	14AUG2020	1	10
			2/1 Month	07OCT2020	36	395
		C4591001 1141 11411141	1/Prevax	27AUG2020	1	10
			2/1 Month	15OCT2020	29	633
		C4591001 1141 11411187	2/1 Month	29OCT2020	29	1723
		C4591001 1141 11411227	2/1 Month	10NOV2020	33	1738
		C4591001 1141 11411236	2/1 Month	13NOV2020	36	363
		C4591001 1141 11411263	1/Prevax	19OCT2020	1	10
			2/1 Month	07DEC2020	29	1138
		C4591001 1141 11411269	1/Prevax	27OCT2020	1	10
		C4591001 1142 11421037	1/Prevax	04AUG2020	1	10
			2/1 Month	29SEP2020	33	794
		C4591001 1142 11421100	1/Prevax	14AUG2020	1	10
			2/1 Month	02OCT2020	30	1055
		C4591001 1142 11421274	1/Prevax	07OCT2020	1	10
			2/1 Month	02DEC2020	36	678
		C4591001 1142 11421338	1/Prevax	04DEC2020	1	10
		C4591001 1146 11461292	2/1 Month	14DEC2020	33	487
		C4591001 1146 11461316	2/1 Month	11DEC2020	31	1103
		C4591001 1146 11461378	2/1 Month	15DEC2020	29	490

090177e1998db3\Final\Final On: 08-Mar-2022 12:27 (GMT)



**16.2.6.1 Listing of Assay Data – Subjects 12 Through 25 Years of Age**

<b>Age Group (Years)</b>	<b>Vaccine Group (as Randomized)</b>	<b>Subject</b>	<b>Dose/ Sampling Time Point</b>	<b>Date of Sample</b>	<b>Rel Day<sup>a</sup></b>	<b>NT50 (Titer)</b>
		C4591001 1147 11471255	1/Prevax	14NOV2020	1	10
			2/1 Month	11JAN2021	38	1087
		C4591001 1149 11491050	1/Prevax	11AUG2020	1	10
			2/1 Month	30SEP2020	30	270
		C4591001 1149 11491079	1/Prevax	17AUG2020	1	10
		C4591001 1149 11491218	1/Prevax	08SEP2020	1	10
			2/1 Month	27OCT2020	29	793
		C4591001 1149 11491255	1/Prevax	18SEP2020	1	10
			2/1 Month	11NOV2020	34	299
		C4591001 1149 11491302	1/Prevax	24SEP2020	1	10
		C4591001 1150 11501016	1/Prevax	19AUG2020	1	10
		C4591001 1150 11501181	2/1 Month	01FEB2021	36	343
		C4591001 1152 11521011	2/1 Month	30SEP2020	30	551
		C4591001 1152 11521019	1/Prevax	12AUG2020	1	10
			2/1 Month	30SEP2020	29	1086
		C4591001 1152 11521114	1/Prevax	19AUG2020	1	10
			2/1 Month	09OCT2020	30	1078
		C4591001 1152 11521115	1/Prevax	19AUG2020	1	10
		C4591001 1152 11521149	2/1 Month	09OCT2020	29	653
		C4591001 1152 11521164	1/Prevax	24AUG2020	1	10
			2/1 Month	12OCT2020	29	481
		C4591001 1152 11521357	2/1 Month	21OCT2020	29	700
		C4591001 1152 11521451	1/Prevax	16SEP2020	1	10
		C4591001 1152 11521464	1/Prevax	18SEP2020	1	10
		C4591001 1152 11521505	1/Prevax	09OCT2020	1	10
			2/1 Month	04DEC2020	36	536

090177e1998db3\Final\Final On: 08-Mar-2022 12:27 (GMT)

**16.2.6.1 Listing of Assay Data – Subjects 12 Through 25 Years of Age**

<b>Age Group (Years)</b>	<b>Vaccine Group (as Randomized)</b>	<b>Subject</b>	<b>Dose/ Sampling Time Point</b>	<b>Date of Sample</b>	<b>Rel Day<sup>a</sup></b>	<b>NT50 (Titer)</b>
		C4591001 1152 11521534	1/Prevax	16OCT2020	1	10
			2/1 Month	02DEC2020	29	313
		C4591001 1152 11521587	1/Prevax	16NOV2020	1	10
			2/1 Month	04JAN2021	29	1075
		C4591001 1152 11521588	1/Prevax	16NOV2020	1	10
			2/1 Month	04JAN2021	29	177
		C4591001 1152 11521589	1/Prevax	17NOV2020	1	10
			2/1 Month	06JAN2021	31	1948
		C4591001 1152 11521600	1/Prevax	24NOV2020	1	10
			2/1 Month	12JAN2021	29	1272
		C4591001 1152 11521601	1/Prevax	24NOV2020	1	10
			2/1 Month	19JAN2021	36	2877
		C4591001 1152 11521634	2/1 Month	25JAN2021	29	455
		C4591001 1156 11561155	2/1 Month	13NOV2020	36	1224
		C4591001 1156 11561229	1/Prevax	12OCT2020	1	10
			2/1 Month	03DEC2020	30	7789
		C4591001 1156 11561258	1/Prevax	20OCT2020	1	17
			2/1 Month	14DEC2020	34	797
		C4591001 1156 11561288	1/Prevax	30OCT2020	1	10
		C4591001 1156 11561291	1/Prevax	30OCT2020	1	10
			2/1 Month	17DEC2020	29	241
		C4591001 1162 11621051	2/1 Month	25SEP2020	29	1609
		C4591001 1162 11621110	1/Prevax	13AUG2020	1	10
			2/1 Month	06OCT2020	35	308
		C4591001 1162 11621418	2/1 Month	12NOV2020	32	795
		C4591001 1163 11631048	1/Prevax	06AUG2020	1	10

090177e1998db3\Final\Final On: 08-Mar-2022 12:27 (GMT)

**16.2.6.1 Listing of Assay Data – Subjects 12 Through 25 Years of Age**

<b>Age Group (Years)</b>	<b>Vaccine Group (as Randomized)</b>	<b>Subject</b>	<b>Dose/ Sampling Time Point</b>	<b>Date of Sample</b>	<b>Rel Day<sup>a</sup></b>	<b>NT50 (Titer)</b>
			2/1 Month	22SEP2020	29	1942
		C4591001 1163 11631106	2/1 Month	29SEP2020	29	268
		C4591001 1166 11661008	1/Prevax	18AUG2020	1	10
			2/1 Month	06OCT2020	29	168
		C4591001 1166 11661048	1/Prevax	31AUG2020	1	10
			2/1 Month	21OCT2020	31	970
		C4591001 1167 11671142	1/Prevax	04SEP2020	1	10
			2/1 Month	21OCT2020	29	95
		C4591001 1167 11671224	1/Prevax	24SEP2020	1	10
			2/1 Month	12NOV2020	31	337
		C4591001 1168 11681035	1/Prevax	17AUG2020	1	10
			2/1 Month	06OCT2020	29	755
		C4591001 1168 11681069	1/Prevax	21AUG2020	1	10
		C4591001 1168 11681098	2/1 Month	15OCT2020	29	919
		C4591001 1168 11681135	1/Prevax	03SEP2020	1	10
			2/1 Month	30OCT2020	29	935
		C4591001 1168 11681219	2/1 Month	02DEC2020	35	4878
		C4591001 1168 11681224	1/Prevax	08OCT2020	1	10
			2/1 Month	01DEC2020	35	555
		C4591001 1171 11711027	1/Prevax	14AUG2020	1	10
			2/1 Month	02OCT2020	29	1685
		C4591001 1171 11711211	1/Prevax	09SEP2020	1	10
		C4591001 1171 11711240	1/Prevax	11SEP2020	1	10
			2/1 Month	06NOV2020	37	939
		C4591001 1177 11771393	2/1 Month	06NOV2020	29	866
		C4591001 1177 11771428	2/1 Month	12NOV2020	29	1045

090177e1998db3\Final\Final On: 08-Mar-2022 12:27 (GMT)

**16.2.6.1 Listing of Assay Data – Subjects 12 Through 25 Years of Age**

<b>Age Group (Years)</b>	<b>Vaccine Group (as Randomized)</b>	<b>Subject</b>	<b>Dose/ Sampling Time Point</b>	<b>Date of Sample</b>	<b>Rel Day<sup>a</sup></b>	<b>NT50 (Titer)</b>
		C4591001 1177 11771540	1/Prevax	20OCT2020	1	10
		C4591001 1177 11771550	2/1 Month	09DEC2020	29	920
		C4591001 1178 11781098	2/1 Month	23OCT2020	29	318
		C4591001 1178 11781156	1/Prevax	11SEP2020	1	10
			2/1 Month	29OCT2020	29	499
		C4591001 1178 11781161	1/Prevax	11SEP2020	1	10
			2/1 Month	02NOV2020	33	536
		C4591001 1178 11781187	1/Prevax	16SEP2020	1	10
			2/1 Month	09NOV2020	34	905
		C4591001 1178 11781301	1/Prevax	14OCT2020	1	10
			2/1 Month	02DEC2020	30	144
		C4591001 1204 12041088	1/Prevax	10SEP2020	1	10
			2/1 Month	13NOV2020	43	596
		C4591001 1204 12041275	1/Prevax	21OCT2020	1	10
		C4591001 1221 12211036	1/Prevax	16NOV2020	1	10
		C4591001 1223 12231117	1/Prevax	05SEP2020	1	10
			2/1 Month	27OCT2020	30	745
		C4591001 1224 12241136	1/Prevax	04SEP2020	1	10
			2/1 Month	30OCT2020	37	1027
		C4591001 1224 12241187	1/Prevax	04DEC2020	1	10
		C4591001 1232 12321028	1/Prevax	17AUG2020	1	10
			2/1 Month	06OCT2020	29	393
		C4591001 1232 12321302	1/Prevax	06OCT2020	1	10
		C4591001 1235 12351003	2/1 Month	20OCT2020	29	574
		C4591001 1235 12351014	1/Prevax	04SEP2020	1	10
		C4591001 1235 12351053	2/1 Month	27OCT2020	29	2872

090177e1998db3\Final\Final On: 08-Mar-2022 12:27 (GMT)

**16.2.6.1 Listing of Assay Data – Subjects 12 Through 25 Years of Age**

Age Group (Years)	Vaccine Group (as Randomized)	Subject	Dose/ Sampling Time Point	Date of Sample	Rel Day <sup>a</sup>	NT50 (Titer)
		C4591001 1235 12351230	1/Prevax	03NOV2020	1	10
		C4591001 1241 12411885	1/Prevax	18SEP2020	1	10
			2/1 Month	13NOV2020	36	570
		C4591001 1248 12481033	1/Prevax	29AUG2020	1	10
			2/1 Month	21OCT2020	32	360
		C4591001 1248 12481038	1/Prevax	30AUG2020	1	10
			2/1 Month	19OCT2020	30	694
		C4591001 1254 12541193	2/1 Month	05DEC2020	29	636
		C4591001 1258 12581023	1/Prevax	09SEP2020	1	10
			2/1 Month	02NOV2020	29	2021
		C4591001 1258 12581065	2/1 Month	07DEC2020	29	1777
		C4591001 1264 12641095	1/Prevax	02SEP2020	1	10
		C4591001 1270 12701153	1/Prevax	12NOV2020	1	10
			2/1 Month	06JAN2021	36	569
		C4591001 1270 12701156	1/Prevax	18NOV2020	1	10
			2/1 Month	07JAN2021	30	1528
		C4591001 1270 12701169	2/1 Month	18JAN2021	34	618
	Placebo	C4591001 1003 10031111	1/Prevax	30JUL2020	1	10
			2/1 Month	23SEP2020	35	10
		C4591001 1006 10061136	1/Prevax	01SEP2020	1	10
			2/1 Month	20OCT2020	29	10
		C4591001 1006 10061159	1/Prevax	24SEP2020	1	10
		C4591001 1006 10061194	1/Prevax	02DEC2020	1	10
			2/1 Month	20JAN2021	29	10
		C4591001 1007 10071082	1/Prevax	28JUL2020	1	10
			2/1 Month	16SEP2020	29	10

090177e1998db3\Final\Final On: 08-Mar-2022 12:27 (GMT)

**16.2.6.1 Listing of Assay Data – Subjects 12 Through 25 Years of Age**

<b>Age Group (Years)</b>	<b>Vaccine Group (as Randomized)</b>	<b>Subject</b>	<b>Dose/ Sampling Time Point</b>	<b>Date of Sample</b>	<b>Rel Day<sup>a</sup></b>	<b>NT50 (Titer)</b>
		C4591001 1009 10091235	1/Prevax	21OCT2020	1	10
		C4591001 1013 10131005	1/Prevax	28JUL2020	1	10
			2/1 Month	16SEP2020	29	10
		C4591001 1013 10131020	1/Prevax	30JUL2020	1	10
			2/1 Month	21SEP2020	34	10
		C4591001 1013 10131060	1/Prevax	03AUG2020	1	10
			2/1 Month	21SEP2020	29	10
		C4591001 1016 10161003	1/Prevax	29JUL2020	1	10
			2/1 Month	16SEP2020	29	10
		C4591001 1016 10161014	1/Prevax	30JUL2020	1	10
			2/1 Month	16SEP2020	29	10
		C4591001 1016 10161299	1/Prevax	23SEP2020	1	10
			2/1 Month	12NOV2020	29	10
		C4591001 1028 10281094	1/Prevax	01SEP2020	1	10
			2/1 Month	22OCT2020	29	10
		C4591001 1028 10281184	2/1 Month	03NOV2020	29	10
		C4591001 1028 10281211	1/Prevax	21SEP2020	1	10
			2/1 Month	18NOV2020	35	10
		C4591001 1028 10281248	1/Prevax	07OCT2020	1	10
			2/1 Month	23NOV2020	29	10
		C4591001 1042 10421003	1/Prevax	29JUL2020	1	10
			2/1 Month	17SEP2020	32	10
		C4591001 1042 10421111	1/Prevax	17AUG2020	1	10
			2/1 Month	07OCT2020	29	10
		C4591001 1042 10421112	1/Prevax	17AUG2020	1	10
			2/1 Month	09OCT2020	31	10

090177e1998db3\Final\Final On: 08-Mar-2022 12:27 (GMT)

**16.2.6.1 Listing of Assay Data – Subjects 12 Through 25 Years of Age**

<b>Age Group (Years)</b>	<b>Vaccine Group (as Randomized)</b>	<b>Subject</b>	<b>Dose/ Sampling Time Point</b>	<b>Date of Sample</b>	<b>Rel Day<sup>a</sup></b>	<b>NT50 (Titer)</b>
		C4591001 1066 10661290	1/Prevax	22SEP2020	1	10
			2/1 Month	09NOV2020	29	10
		C4591001 1079 10791013	1/Prevax	30JUL2020	1	10
			2/1 Month	23SEP2020	36	10
		C4591001 1079 10791162	1/Prevax	20AUG2020	1	10
		C4591001 1080 10801055	1/Prevax	18AUG2020	1	10
			2/1 Month	07OCT2020	30	10
		C4591001 1083 10831001	1/Prevax	29JUL2020	1	10
			2/1 Month	18SEP2020	29	10
		C4591001 1085 10851003	1/Prevax	30JUL2020	1	10
		C4591001 1087 10871061	2/1 Month	29SEP2020	29	10
		C4591001 1089 10891015	1/Prevax	30JUL2020	1	10
			2/1 Month	21SEP2020	35	10
		C4591001 1092 10921083	1/Prevax	26AUG2020	1	10
			2/1 Month	15OCT2020	30	10
		C4591001 1093 10931203	1/Prevax	23OCT2020	1	10
		C4591001 1094 10941076	1/Prevax	01SEP2020	1	10
			2/1 Month	22OCT2020	29	10
		C4591001 1095 10951002	1/Prevax	30JUL2020	1	10
			2/1 Month	18SEP2020	29	10
		C4591001 1095 10951106	1/Prevax	07AUG2020	1	10
			2/1 Month	28SEP2020	32	10
		C4591001 1095 10951312	1/Prevax	20NOV2020	1	10
			2/1 Month	11JAN2021	32	10
		C4591001 1107 11071010	1/Prevax	30JUL2020	1	38
			2/1 Month	21SEP2020	35	67

090177e1998db3\Final\Final On: 08-Mar-2022 12:27 (GMT)

**16.2.6.1 Listing of Assay Data – Subjects 12 Through 25 Years of Age**

<b>Age Group (Years)</b>	<b>Vaccine Group (as Randomized)</b>	<b>Subject</b>	<b>Dose/ Sampling Time Point</b>	<b>Date of Sample</b>	<b>Rel Day<sup>a</sup></b>	<b>NT50 (Titer)</b>
		C4591001 1109 11091030	1/Prevax	30JUL2020	1	10
		C4591001 1109 11091092	1/Prevax	01AUG2020	1	10
			2/1 Month	26SEP2020	35	10
		C4591001 1109 11091309	1/Prevax	22AUG2020	1	10
			2/1 Month	19OCT2020	40	10
		C4591001 1112 11121125	1/Prevax	17AUG2020	1	10
			2/1 Month	12OCT2020	34	16
		C4591001 1112 11121260	1/Prevax	06OCT2020	1	10
		C4591001 1116 11161322	1/Prevax	25SEP2020	1	10
		C4591001 1118 11181059	1/Prevax	19AUG2020	1	10
			2/1 Month	09OCT2020	29	10
		C4591001 1126 11261211	1/Prevax	17NOV2020	1	10
			2/1 Month	06JAN2021	29	10
		C4591001 1129 11291265	1/Prevax	03DEC2020	1	10
			2/1 Month	21JAN2021	31	10
		C4591001 1139 11391167	1/Prevax	11DEC2020	1	10
			2/1 Month	01FEB2021	34	10
		C4591001 1141 11411226	2/1 Month	10NOV2020	29	10
		C4591001 1146 11461342	2/1 Month	14DEC2020	29	10
		C4591001 1152 11521009	1/Prevax	12AUG2020	1	10
			2/1 Month	30SEP2020	29	10
		C4591001 1152 11521222	2/1 Month	14OCT2020	31	10
		C4591001 1168 11681088	1/Prevax	26AUG2020	1	10
			2/1 Month	20OCT2020	35	95
		C4591001 1168 11681090	2/1 Month	15OCT2020	29	10
		C4591001 1171 11711152	2/1 Month	20OCT2020	30	10

090177e1998db3\Final\Final On: 08-Mar-2022 12:27 (GMT)



### 16.2.6.1 Listing of Assay Data – Subjects 12 Through 25 Years of Age

Age Group (Years)	Vaccine Group (as Randomized)	Subject	Dose/ Sampling Time Point	Date of Sample	Rel Day <sup>a</sup>	NT50 (Titer)
		C4591001 1171 11711221	2/1 Month	26OCT2020	29	10
		C4591001 1204 12041061	1/Prevax	08SEP2020	1	10
			2/1 Month	26OCT2020	29	10
		C4591001 1221 12211006	2/1 Month	04DEC2020	31	10
		C4591001 1223 12231113	1/Prevax	05SEP2020	1	10
			2/1 Month	27OCT2020	30	10
		C4591001 1231 12311556	1/Prevax	16AUG2020	1	10
			2/1 Month	09OCT2020	33	10

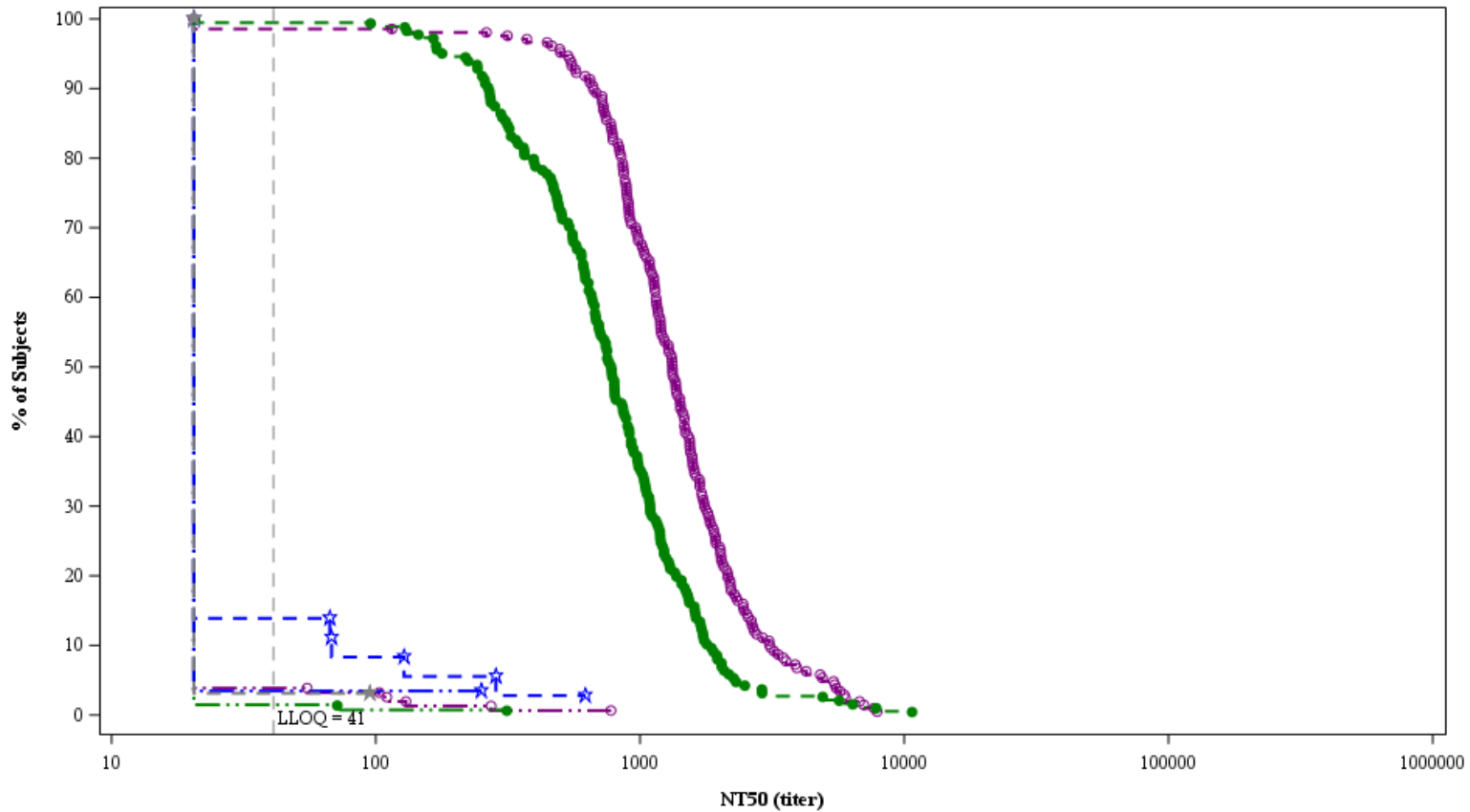
Abbreviation: NT50 = 50% neutralizing titer.

a. Relative day (RelDay) = date of blood draw - date of last vaccination + 1.

PFIZER CONFIDENTIAL SDTM Creation: 09FEB2022 (12:16) Source Data: adva Table Generation: 09FEB2022 (18:59)

(CutoffDate: 13MAR2021, SnapshotDate: 25MAR2021) Output File: ./nda3\_unblinded/C4591001\_BLA\_IMM/adva\_1001\_ped

RCDCs – NT50 – Subjects 12 Through 15 and 16 Through 25 Years of Age (Immunogenicity Subset) – Dose 2 Evaluable Immunogenicity Population



Vaccine Group by Age Group and Time Point			
—○—	BNT162b2 (30 µg) 12-15 Years before Dose 1	—☆—	Placebo 12-15 Years before Dose 1
—●—	BNT162b2 (30 µg) 12-15 Years 1 month after Dose 2	—★—	Placebo 12-15 Years 1 month after Dose 2
—●—	BNT162b2 (30 µg) 16-25 Years before Dose 1	—☆—	Placebo 16-25 Years before Dose 1
—●—	BNT162b2 (30 µg) 16-25 Years 1 month after Dose 2	—★—	Placebo 16-25 Years 1 month after Dose 2

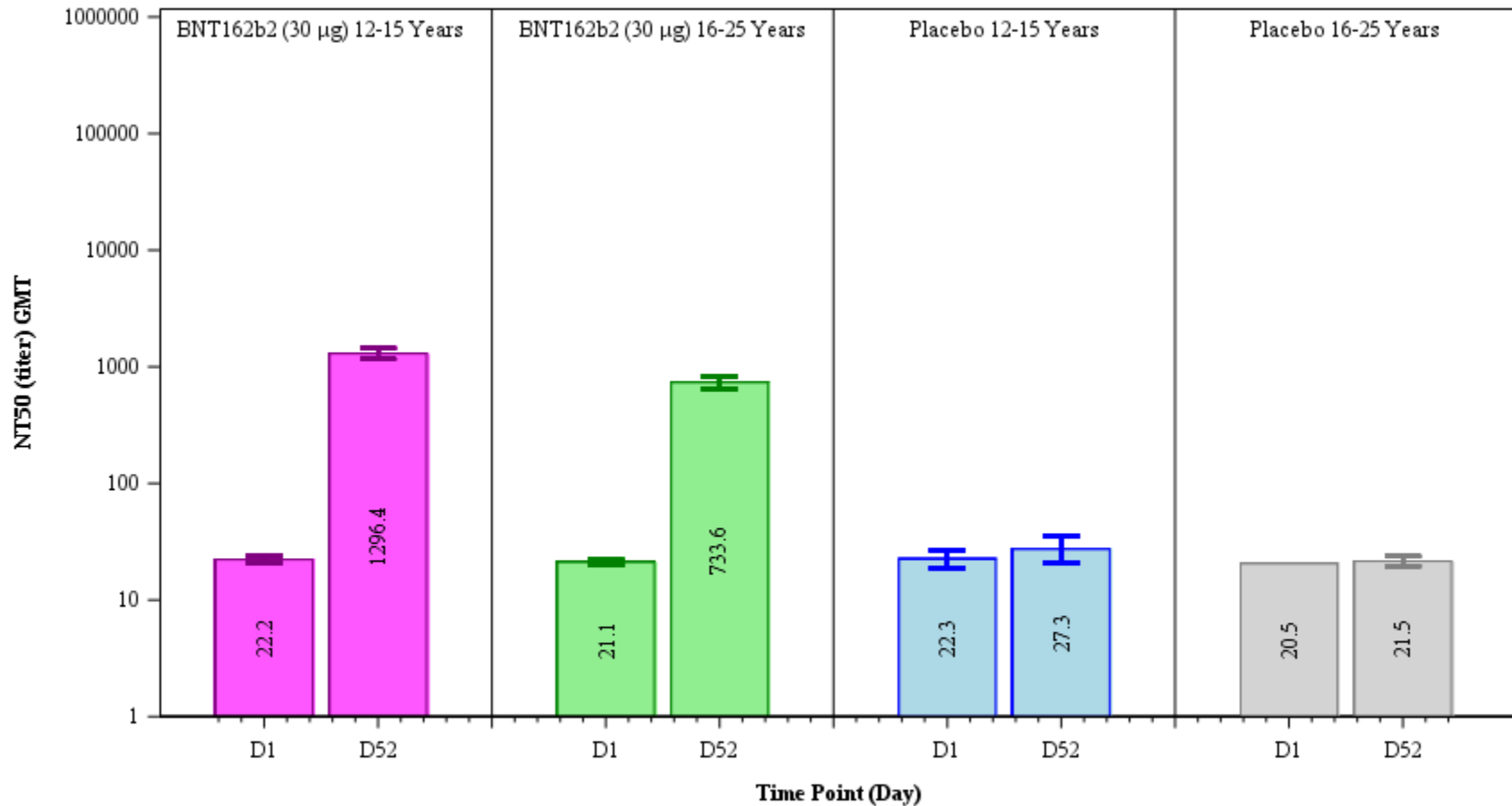
Abbreviations: LLOQ = lower limit of quantitation; NT50 = 50% neutralizing titer; RCDC = reverse cumulative distribution curve; SARS-CoV-2 = severe acute respiratory syndrome coronavirus 2.

Note: LLOQ value is represented using a vertical line. Assay results below the LLOQ were set to  $0.5 \times \text{LLOQ}$  in the analysis.

PFIZER CONFIDENTIAL SDTM Creation: 09FEB2022 (12:16) Source Data: adva Table Generation: 09FEB2022 (19:03)

(Cutoff Date: 13MAR2021, Snapshot Date: 25MAR2021) Output File: .\nda3\_unblinded\C4591001\_BLA\_IMM\adva\_f003\_sars\_50\_ped

**GMTs and 95% CIs – NT50 – Subjects 12 Through 15 and 16 Through 25 Years of Age (Immunogenicity Subset) –  
Dose 2 Evaluable Immunogenicity Population**



Abbreviations: D = day; GMT = geometric mean titer; NT50 = 50% neutralizing titer; SARS-CoV-2 = severe acute respiratory syndrome coronavirus 2.

Note: Number within each bar denotes geometric mean titer.

PFIZER CONFIDENTIAL SDTM Creation: 09FEB2022 (12:16) Source Data: adva Table Generation: 09FEB2022 (19:03)

(Cutoff Date: 13MAR2021, Snapshot Date: 25MAR2021) Output File: /nda3\_unblinded/C4591001\_BLA\_IMM/adva\_f002\_sars\_50\_ped